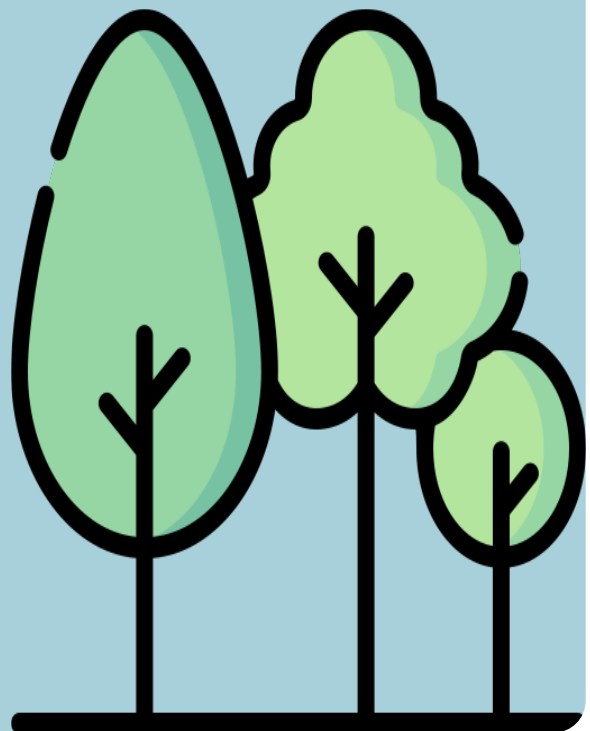


PORT COQUITLAM CLIMATE ACTION PLAN ENGAGEMENT SUMMARY

FEBRUARY 17, 2022



EXECUTIVE SUMMARY

During the Port Coquitlam Climate Action Plan community survey we heard from about 233 Port Coquitlam community members about their priorities relating to Climate Action. The results from the survey as well as continued engagement with the public, Council, kʷikʷəł'əm (Kwikwetlem) First Nation and stakeholders will be used to inform the development of actions for Port Coquitlam's Climate Action Plan. The following summarizes what we heard through the survey.

The majority of respondents are very concerned about impacts of climate change in Port Coquitlam over the next 10 years, with the top three concerns being: flooding from intense rain, extreme heat, and flooding from rising river levels - all of which have been prevalent in the past year.

Top changes that respondents have noticed in their community related to climate change are **higher temperatures in the summer months and flooding as a result of heavy rainfall**. The aspects of life that respondents are most concerned about are the quality of the natural environment, homes and personal property, and personal health and safety. Other related concerns raised include impacts on wildlife habitats, ecosystems, and biodiversity and damage to infrastructure.

Respondent's **top priorities** for City investment and focus over the next 5 years include: **protecting trees, watersheds and natural areas, climate change mitigation by reducing local greenhouse gas emissions, and climate change adaptation by understanding and managing climate change impacts**.

In order to carry out priorities, we also asked respondents to choose **areas of actions** as a place to start. The top choices include increasing carbon sequestration to reduce emissions, through land use planning, and **through energy by increasing renewable energy and biofuel use in industrial facilities and/or generating more local solar power**.

We asked respondents to identify criteria that could be used to evaluate potential actions. **Reducing emissions as much as possible was the most important criteria, followed by improving resilience to climate impacts, demonstrating climate leadership in the region, and providing additional community and natural benefits**. Other criteria that respondents provided in the open ended questions include the cost of inaction and impacts on communities with lower income and/or who are most vulnerable to impacts of climate change.

This online survey was an important initial step in the engagement process. The information gathered will be used to help inform the development of adaptation and mitigation actions.

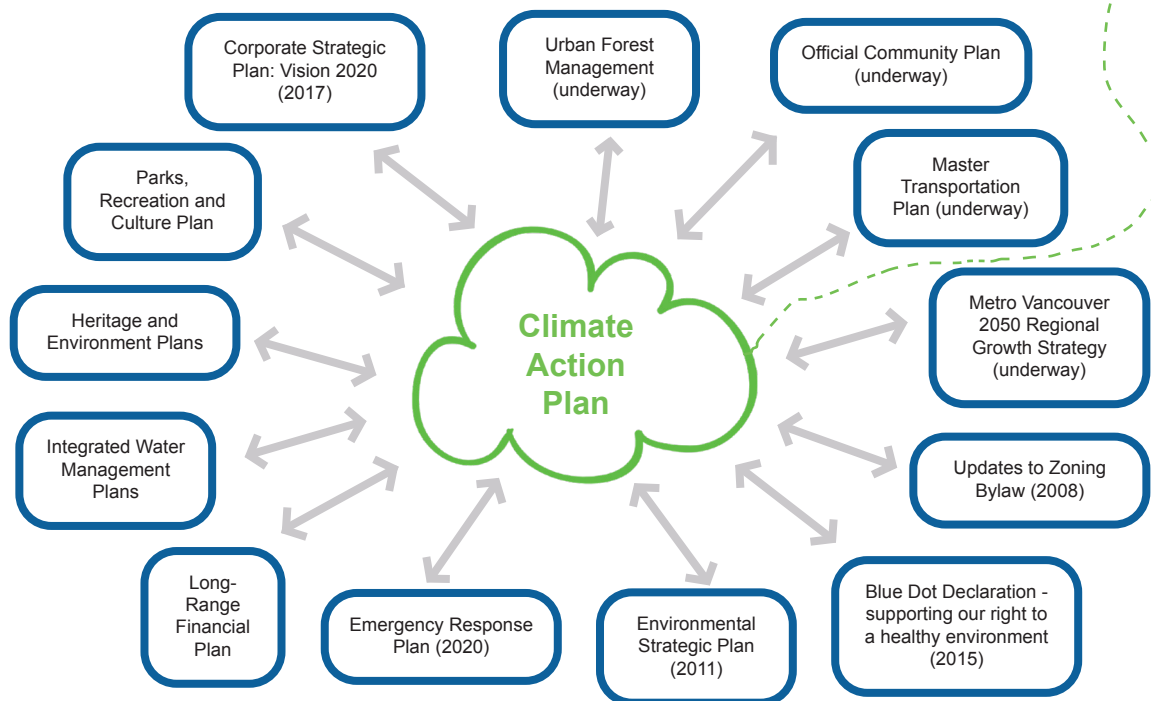
INTRODUCTION

What is this project about?

Building on the City's 2010 Corporate and Community Climate Action Plan, Port Coquitlam plans to adopt a comprehensive new made-in-PoCo Climate Action Plan combining input collected from the public, Council, kʷikʷəλ'əm (Kwikwetlem) First Nation and other key stakeholders with climate science, research and technical data.

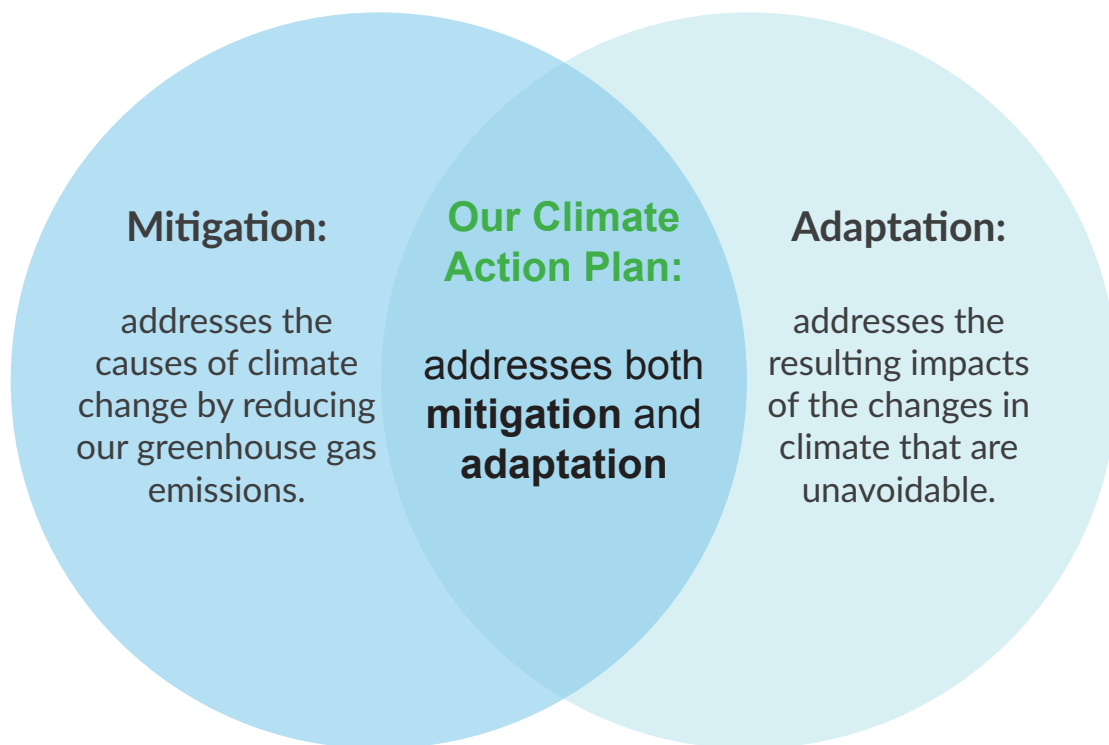
This new plan will align with emerging best practices through a low-carbon resilience approach which sets out actions to both reduce greenhouse gas emissions and manage the impact of climate change on City services and the community. The intent is to adopt a new Climate Action Plan that demonstrates strong leadership, is ready for implementation, and has a focus on educating and engaging people to participate in achieving its objectives.

This Plan will not only build upon existing plans, policies and initiatives but will also inform other work that benefits our community.



What are we engaging on?

Before we can begin developing the Climate Action Plan, we first need to understand where we're starting from. This survey gave Port Coquitlam community members the opportunity to tell us what their concerns and priorities for the future are, and what their vision for a low-carbon future looks like. All questions included the themes of mitigation and/or adaptation.



Why are we engaging?

Based on current trends for Metro Vancouver, climate projects include an expected average temperature increase of 3°C and a doubling in the number of summer days above 25°C as well as increased annual precipitation with more intense and frequent rain and windstorms and rising sea level.

Summers are expected to be hotter and drier, with increased risk of impaired air quality due to wildfire events. A 2018 International Panel on Climate Change (IPCC) report states that in order to avoid catastrophic climate change, global temperature rise must not exceed 1.5°C. As a result, many cities are setting emissions reductions targets that align with IPCC guidance to stay below 1.5°C of warming.

As communities across B.C. are grappling with the impacts of climate change (from wildfires and drought, to more severe river flooding and extreme storms), there is opportunity to create a future that is healthy and prosperous for all members of the community. Port Coquitlam's Climate Action Plan will set a vision for a low-carbon future and identify the steps required to get there.

The actions taken today to reduce our GHG emissions and adapt to climate change will also create healthier lifestyles and bring new opportunities in the emerging green economy.

How did we conduct engagement?

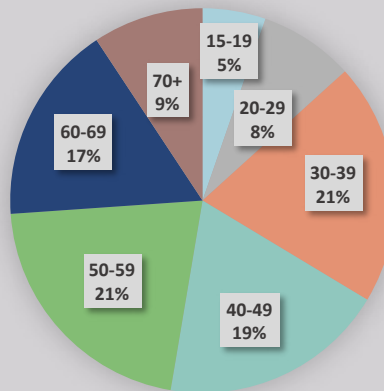
The survey was open from November 15 - December 5, 2021 and consisted of both closed and open ended questions as well as demographic questions. The survey was available on the City of Port Coquitlam's Let's Talk PoCo (portcoquitlam.ca/letstalk) website, was advertised through a media release and print advertising and at Pop Up events at both community centres, Hyde Creek and Port Coquitlam Community Centre. It was presented at council meetings, promoted through eblasts, and on the City's social media channels as reminders to residents to complete the survey. Personalized letters were also sent to stakeholder groups to invite their participation. In addition to the online survey, a quiz was also created to test climate knowledge. During this initial phase of engagement, we also conducted workshops with staff and Council.

Who we engaged

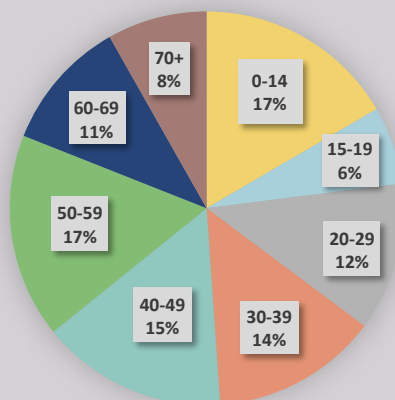
We heard from 233 community members through our Climate Action Plan engagement survey. Find below a breakdown of who those community members were.

AGE

The largest age group of respondents are 50-59 years of age (21.2%). Comparable groups are ages 40-49 (19.0%) and 30-39 (19.9%). The lowest is 15-19 (5.2%) and none below 15 years of age. As the two charts below show, the percentage of respondents by age group is fairly consistent with the overall age breakdown in Port Coquitlam, with the exception of those below 15. Targeted youth engagement will be a priority in our next phase of engagement.



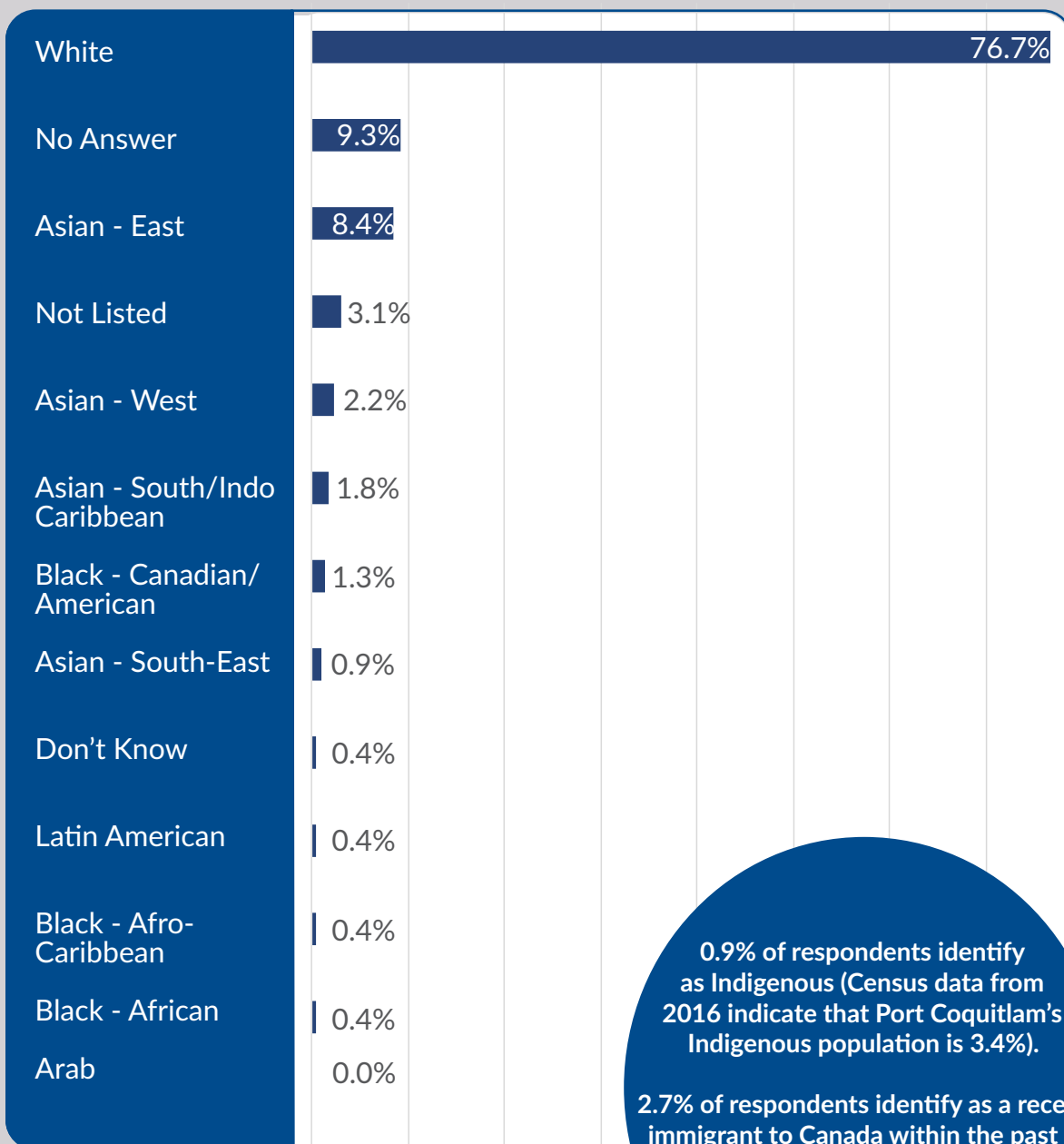
Breakdown of respondents' ages by percentages.



Breakdown of City of Port Coquitlam's residents by age groups (Source: Statistics Canada).

ETHNICITY

The table below illustrates a breakdown of respondent's ethnicity.

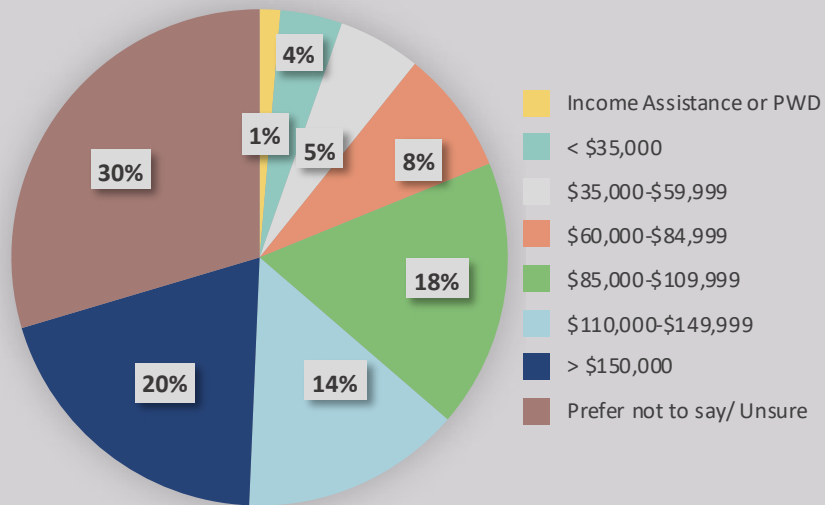


0.9% of respondents identify as Indigenous (Census data from 2016 indicate that Port Coquitlam's Indigenous population is 3.4%).

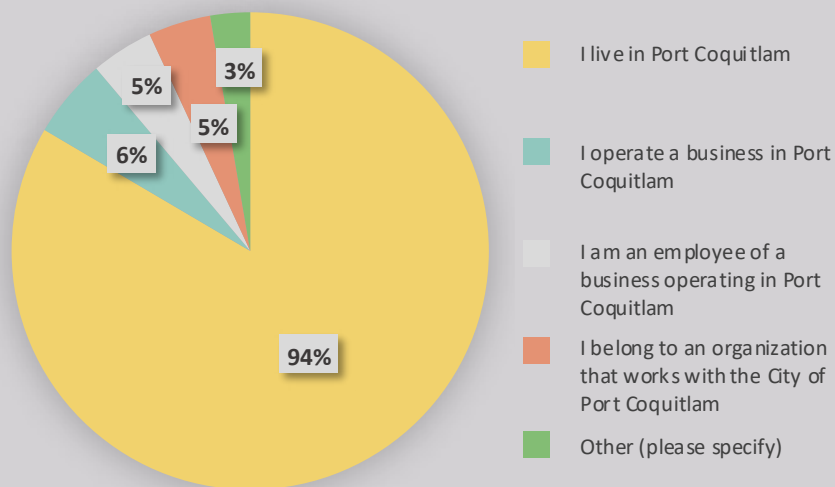
2.7% of respondents identify as a recent immigrant to Canada within the past 5 years (Census data from 2016 indicate that 3.4% of Port Coquitlam residents have recent immigration status).

LEVEL OF INCOME AND RELATIONSHIP TO PORT COQUITLAM

We also asked respondents to indicate their level of household income and relationship to the City of Port Coquitlam. 94% of respondents were Port Coquitlam residents.



Breakdown of respondents' level of income.



Breakdown of respondents' relationship to Port Coquitlam; respondents had the choice of choosing multiple options.

WHAT WE HEARD

Community Concerns and Observations

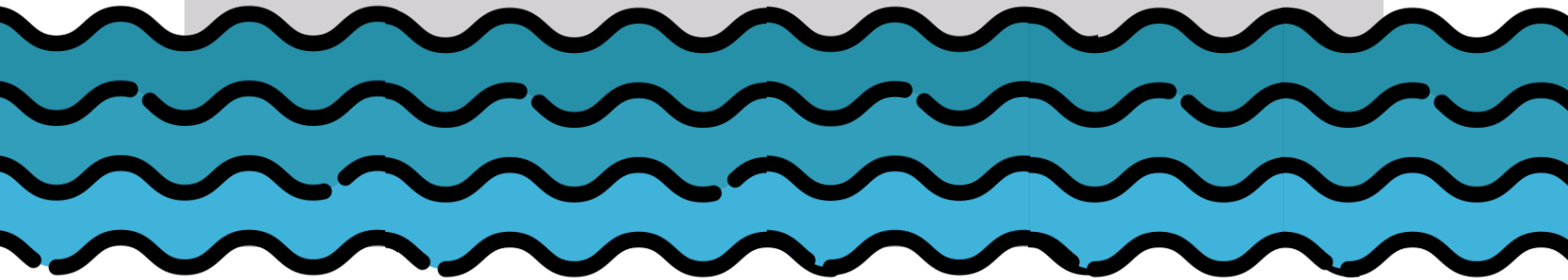
We wanted to know people’s level of concern for a range of likely climate impacts, changes they have observed locally, and their perspectives on how they anticipate climate change will impact their daily life. An understanding of people’s concerns and current observations will help us tailor our City’s climate approaches to better suit our local context.

HOW CONCERNED ARE YOU ABOUT EACH OF THE FOLLOWING IMPACTS OVER THE NEXT 10 YEARS?

The majority of respondents are very concerned about impacts of climate change in Port Coquitlam over the next 10 years, with the top three concerns being flooding from intense rain (63%), extreme heat (63%), and flooding from rising river levels (62%).

The age groups most likely to be very concerned are those between 30-39 or 50-59.

Those indicating a level of income of \$85,000 (before tax) or greater per annum were most likely to be very concerned about these impacts.



WHAT CHANGES HAVE YOU OBSERVED LOCALLY THAT YOU PERCEIVE TO BE RELATED TO CLIMATE CHANGE?

Of the 189 responses to this questions, common observations people describe included:

- ❑ Higher summer temperatures on average and more periods of extreme heat. Their homes are becoming too warm to bear and they feel the need to buy air conditioning in order to be comfortable (38%)
- ❑ Flooding in parks, on trails and streets and on their lawns and basements, as a result of heavy rainfall (34%)
- ❑ Less rain in summer and greater heat resulting in more trees and plants dying in parks, forests and personal property. Some remarked that even shaded vegetation was dying, which was not the case in the past (25%)
- ❑ More periods of heavy rainfall, and more extreme storms with intense flooding and winds in the winter (21%)
- ❑ Higher water levels in rivers and creeks in general and after intense rainfall. Examples include Coquitlam River, Hyde Creek (21%)
- ❑ More intense and frequent incidence of wildfire smoke, causing health-related impacts (ie. asthma) (16%)
- ❑ Drought, resulting in lower creek levels (6%)
- ❑ Less salmon in creeks, ostensibly a result of diminishing creek levels (6%)

Other impacts, though not as commonly observed, included soil erosion in natural environments, increase in bear activity, changes to the timing of bird migration, and changes in plant cycles.

WHAT ASPECTS OF LIFE IN PORT COQUITLAM ARE YOU MOST CONCERNED ABOUT BEING AFFECTED BY THE IMPACTS OF CLIMATE CHANGE?

The top three aspects of life that people are very concerned about are quality of the natural environment (50%), homes and personal property (46%), and personal health and safety (39%). Aspects of the least concern are recreational activities (20%) and community connectedness (20%).

WHAT OTHER ASPECTS OF LIFE IN PORT COQUITLAM ARE YOU CONCERNED WILL BE AFFECTED BY THE IMPACTS OF CLIMATE CHANGE?

From the 142 responses to this question, the top concerns participants raised include:

- Concerns with impacts on wildlife habitats, ecosystems, biodiversity (15%)
- Damage to infrastructure / ability to upgrade and build new infrastructure resilient to impacts (13%)
- Human health and safety from disasters (floods, fires, landslides) (11%)
- Rising cost of living (food, homes, taxes due to cost of adapting to climate change) (11%)
- Availability of food (10%)
- Impact on populations made vulnerable by climate change (low-income, seniors, youth) (9%)
- Recreational opportunities and green space (6%)

WHAT WE HEARD

Priorities for the Future

We asked people to prioritize the issues the City should be investing in, actions the City should be taking to mitigate climate change and adapt to its impacts, and criteria the City should be using when evaluating climate-related actions. Responses to these questions will influence the types of priorities and actions we may emphasize in our Climate Action Plan.

WHICH OF THE FOLLOWING ISSUES ARE YOUR TOP PRIORITIES FOR THE CITY TO INVEST IN OVER THE NEXT 5 YEARS?

Looking ahead to over the next 5 years, respondents ranked the following priorities in order of importance, 1 = higher average ranking, 7 = lower average ranking.

2.69



Protect trees, watersheds and natural areas

2.86



Climate change mitigation

3.51



Climate change adaptation

3.94



Address housing affordability and homelessness

4.23



Support physical, mental and social health

4.85



Reduce traffic congestion

5.11



Growing local jobs and businesses

WHAT KINDS OF ACTIONS DO YOU THINK PORT COQUITLAM SHOULD PRIORITIZE TO MITIGATE CLIMATE CHANGE?

This question focuses on methods for reducing emissions. The top three action areas respondents think Port Coquitlam should prioritize to reduce emissions are to increase carbon sequestration (67%), through land use planning (67%), and through energy by increasing renewable energy and biofuel use in industrial facilities (56%) and/or generating more local solar power (55%).

HOW IMPORTANT ARE THESE CRITERIA WHEN CONSIDERING ACTIONS TO MITIGATE CLIMATE CHANGE AND ADAPT TO LOCAL IMPACTS OF CLIMATE CHANGE?

In terms of criteria when considering actions to mitigate climate change and adapt to local impacts of climate change, the top considerations that respondents find very important are to reduce emissions as much as possible (66%), to improve resilience to climate impacts (60%), and to demonstrate climate leadership in the region (56%) and to provide additional community and natural benefits (56%).

When comparing how participants from different income groups answered this question, reducing emissions as much as possible and improving resilience to climate change were fairly consistently selected as top criteria across income levels. Of note, those making less than \$35,000 were the only income group to select improve equity as a top criteria (selected by 66.7% of participants in that income group).

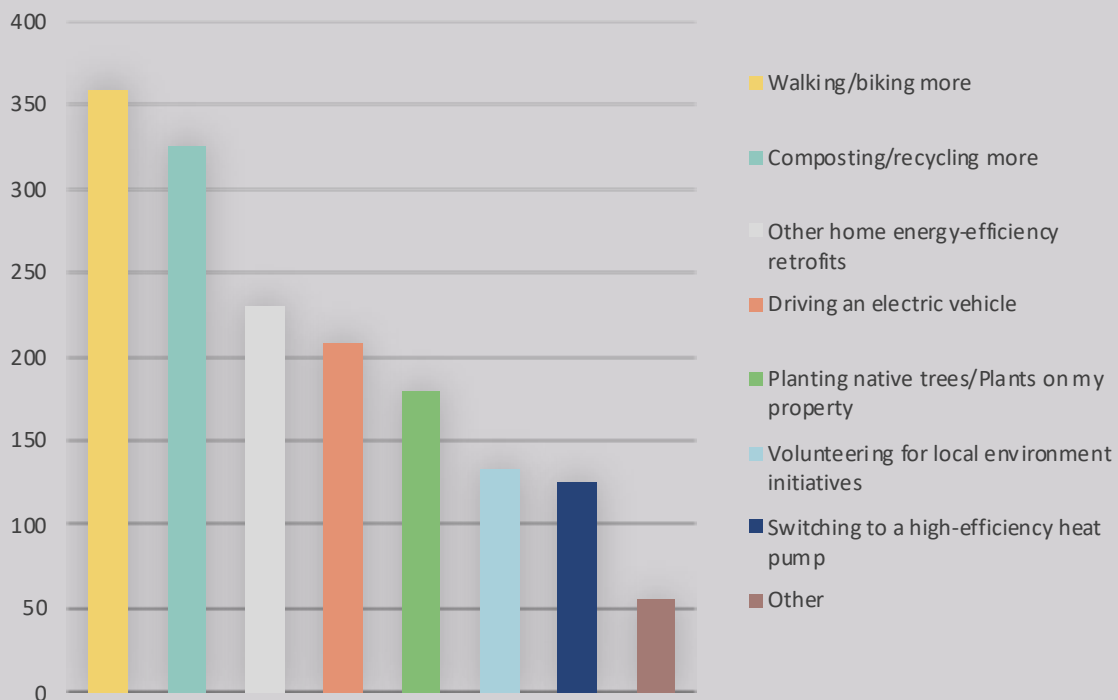
WHAT OTHER CRITERIA SHOULD PORT COQUITLAM CONSIDER WHEN IDENTIFYING ACTIONS TO MITIGATE AND ADAPT TO THE LOCAL IMPACTS OF CLIMATE CHANGE?

Other criteria suggested by respondents include:

- Cost of inaction
- Impacts on communities with lower income and other communities most vulnerable to impacts of climate change
- Impacts on human health
- Ease of implementation/ease to encourage resident behaviour change
- Timeliness
- Creativity and innovation

HOW WOULD RESPONDENTS TAKE PART IN CLIMATE CHANGE?

As part of Port Coquitlam's recent 2022 budget engagement, residents were asked what actions related to climate change mitigation they would be willing to take part in. Of the 526 responses to this question, there was a high interest in taking part in walking/biking and composting/recycling. The graph below shows that respondents showed the most interest for lower-cost actions.



Breakdown of actions that respondents would be willing to take part in; they had the choice of choosing multiple options.

NEXT STEPS

Feedback we heard from the survey will play an important role in informing development of the City's Climate Action Plan. Survey responses provided important information about how climate change is already impacting our community, what strategies you are taking to reduce household emissions, and what is important to you about how the City plans for further action. Survey feedback will inform planning in the following ways:

- Respondent observations and concerns about climate impacts were used to ground-truth results from the climate risk assessment in Phase 1.
- Demographic information about respondents will continue to help the City understand who we've heard from and how to focus outreach to get input from underrepresented groups.
- Community-wide investment priorities shows that climate action is important to our community. It also shows what other priorities can be also be supported by climate action (e.g. prioritizing strategies that protect & enhance natural areas).
- Feedback on the kinds of mitigation and adaptation actions the City should prioritize will be used to develop criteria to guide action identification throughout Phase 2.

Community input will continue to play an important role to guide development of our Climate Action Plan. As we work to develop climate actions, we'll reach back out to the community through a follow up survey and meetings for input on what needs to be considered as actions are planned and put in practice. This will include workshops with organizations that can help us implement the plan and focus groups with community organizations representing groups who are most impacted by the effects of climate change, as well as those who are typically underrepresented in public decision-making contexts.

Prepared by: