

# GIVE US YOUR FEEDBACK BY JAN. 31



## 2024 Budget at a Glance

YOUR CITY, YOUR SAY

### PRIORITIES FOR 2024



Infrastructure



Service Sustainability



Livability

### GETTING THE BASICS RIGHT

#### MESSAGE FROM COUNCIL

All cities face difficult choices at budget time, but here in Port Coquitlam we are very aware that ultimately, it's our taxpayers who pay the bills. With this in mind, we're proposing a responsible budget for 2024 that invests in priority services and needs, while doing whatever is possible to reduce the burden on residents during this challenging financial landscape.

At a time when the City is facing a variety of financial impacts beyond our control, there was much consideration and hard work by both staff and Council to achieve a proposed tax increase that is well below average in Metro Vancouver.

As always, we put every budget request under the microscope, sought out creative funding options, and maintained our focus on getting the basics right, so that we can continue delivering the services our community relies on now and in the future.



From left to right: Cllr. Glenn Pollock, Cllr. Dean Washington, Cllr. Nancy McCurrach, Mayor Brad West, Cllr. Paige Petriw, Cllr. Steve Darling and Cllr. Darrell Penner.

It's now your turn to have your say. Please review our 2024 budget details here and online, and then fill out the printed or online survey by Jan. 31. Residents who complete the survey will once again have a chance to win a prize that supports a local business of their choice.

  
Mayor Brad West

Give your feedback online or in attached survey by Jan. 31 | Details: [portcoquitlam.ca/2024budget](https://portcoquitlam.ca/2024budget)

## 2024 Operating Budget

The budget pays for a wide variety of City services. The 2024 draft budget is affected by a number of factors, including costs beyond the City's control such as labour contracts, inflation, rising costs from external service providers, and new responsibilities from provincial accessibility and housing legislation.

**\$134.4M**

2024 DRAFT  
OPERATING  
BUDGET

### Service Level Changes

Service enhancements proposed for 2024 are focused on priority services and needs.

Most of the service enhancement costs are to be offset by savings, fees and other revenue. As a result, the taxation impact from service enhancements proposed for 2024 is 0.53% for the average home.

Tactics to reduce the tax impact for 2024 also included deferring non-critical items, selective use of reserves and surplus, and leveraging of grant funding.



Improving safety, including a new firefighter and 1.5 bylaw officers



Support for housing, including resources to speed up application processing



Improving waste services, such as formalizing large item pickup in 2024 and glass pickup in 2025



Enhancing programs and maintenance at Recreation Centres and support for recreation access



Enhancing special events including the opening of the upgraded Leigh Square and other City/community events



Continuing to set aside funds to maintain and replace civic buildings, utilities, roads and other infrastructure

## 2024 Capital Projects

The City's annual budget also allocates funding for capital improvements. Here are some of the projects rolling out in 2024. For information on current projects, visit [portcoquitlam.ca/capitalprojects](https://portcoquitlam.ca/capitalprojects).

**\$33M**

2024  
CAPITAL  
BUDGET



Completion of Leigh Square upgrades



Start of construction on Gates Park soccer hub



Neighbourhood road paving and utility upgrades



Sidewalks, pedestrian safety, and traffic calming



Official Community Plan resources to enhance housing



Challenging 6.5-km loop trail in Mary Hill area



Upgrades to Routley Wading Pool



Upgrades to Maple Creek drainage

# What Will I Pay (Proposed) in 2024?

**Average home (all types): +5.58% municipal property taxes in 2024**

- ▶ Municipal property taxes and levies for the average Port Coquitlam home (assessed at \$1,078,237) are proposed to increase in 2024 by 5.58 per cent – one of the lowest proposed increases in the region. A similar increase is proposed for business taxes.
- ▶ Utility increases are primarily due to a move to a new data-driven and equitable levy structure based on housing type and service level. The impact is being phased in over five years.
- ▶ These figures are based on 2023 property assessment values and do not include the regional and provincial taxes that also appear on the annual property tax bill. See article on the back about the potential impact of a property's assessed value.

## Prepayment Program – Pay Monthly!

Did you know you can pay your tax and utility bills in easy monthly installments through the City's Prepayment Plan? Learn more and sign up for next year at [portcoquitlam.ca/prepayment](https://portcoquitlam.ca/prepayment).

## Municipal Property Taxes and Utilities for Average Port Coquitlam Home Assessed at \$1,078,237

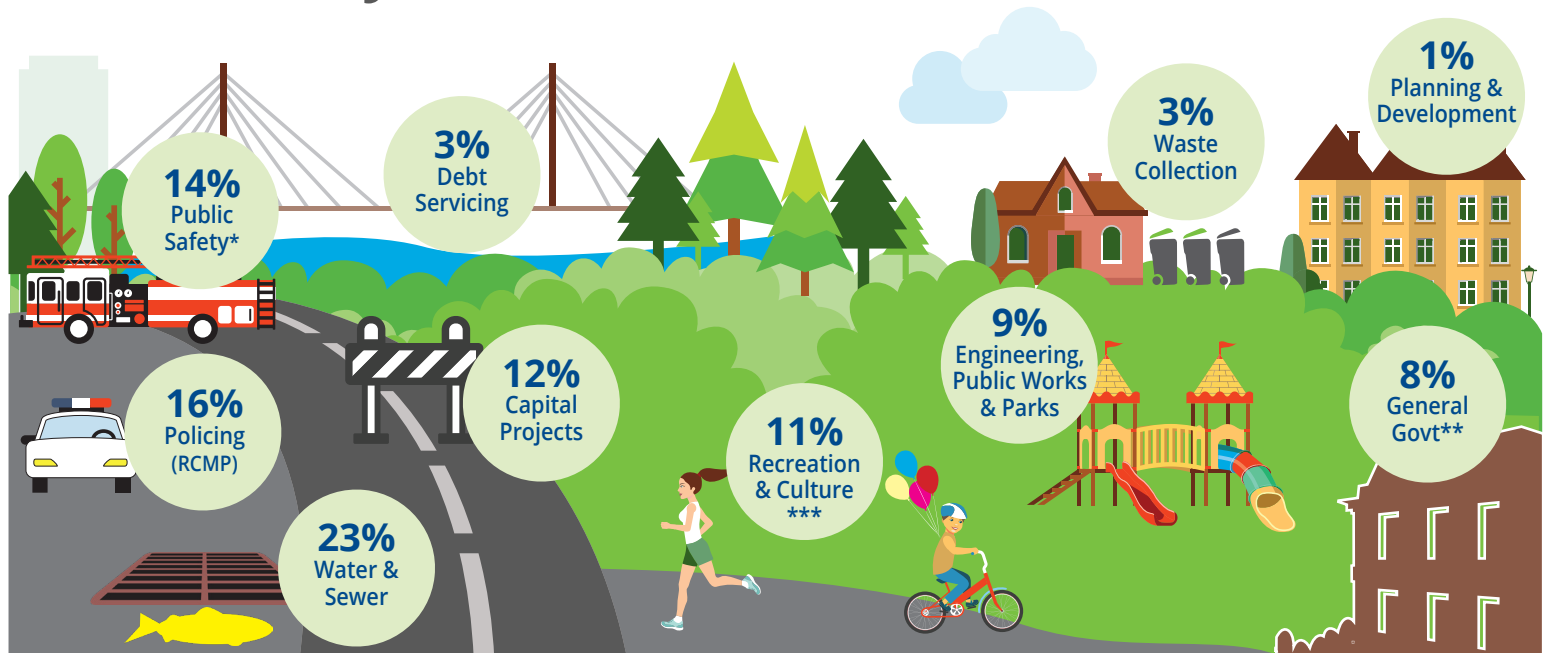
	2023	\$ Change (Tax)	% Change (Tax)	Proposed 2024
Tax – City Services	\$1,631.99	\$ 74.89	3.56%	\$1,706.88
RCMP *	\$ 472.51	\$ 42.50	2.02%	\$ 515.01
<b>Total Municipal Property Tax</b>	<b>\$2,104.50</b>	<b>\$117.39</b>	<b>5.58%</b>	<b>\$2,221.89</b>
Levy – Water	\$ 471.19	\$ 13.95	2.96%	\$ 485.14
Levy – Sewer	\$ 350.21	\$ 51.50	14.71%	\$ 401.71
Levy – Solid Waste**	\$ 247.34	\$ 62.67	25.34%	\$ 310.00

\* Federally-negotiated RCMP contract

\*\* Applies to single-family homes only on City waste service

**Total monthly taxes & utilities: \$284.95\*\***

# Where Do My Taxes and Levies Go?



\* Includes Fire, Bylaw Enforcement, Community Policing

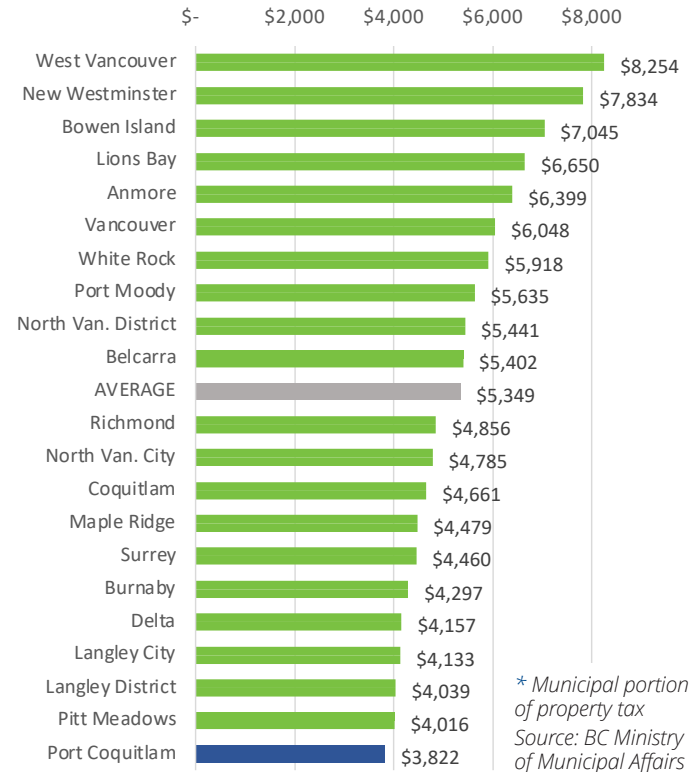
\*\* Includes Finance, HR, IT, Corporate Office, Licensing

\*\*\* Includes library

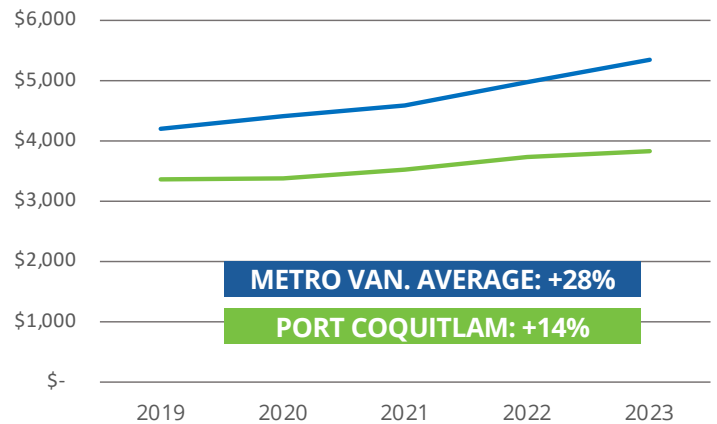
## How Does Port Coquitlam Compare?

Port Coquitlam has established a track record of lower-than-average property taxes and utilities when compared to other municipalities in Metro Vancouver and is on track to continue that trend in 2024 with one of the lowest proposed tax increases in the region.

### Taxes\* and utilities in Metro Vancouver (2023)



### Taxes and utilities: Port Coquitlam vs. Metro Vancouver average (2019-2023)



Over the past five years, taxes and utilities in Port Coquitlam have risen half as much as the average across Metro Vancouver.

## How Will My Assessment Affect My Taxes?

A property's assessed value determines its share of taxes. The assessments provided by BC Assessment each January indicate how much Port Coquitlam property assessments increased or decreased from the prior year.

Properties whose value has increased or decreased **more than other typical properties of the same type** will experience a tax rate that differs from the average. For more details, see the assessment mailed to you in January.

If your assessment rises more or decreases **less** than the City average = your 2024 property tax increase will be **higher** than the average

**Average assessment change across the City**

If your assessment **rises less or decreases more** than the City average = your 2024 property tax increase will be **lower** than the average

**GIVE US YOUR  
FEEDBACK BY  
JANUARY 31  
FOR A CHANCE  
TO WIN!**

Help shape future City services and decisions by providing your feedback by Jan. 31. Port Coquitlam residents will be entered in a draw for a \$150 gift card to a local business of their choice.

Save time: access online information and tools by providing feedback through [portcoquitlam.ca/2024budget](https://portcoquitlam.ca/2024budget). Or if you prefer, submit the enclosed form to [budget@portcoquitlam.ca](mailto:budget@portcoquitlam.ca), or by mail or in the dropbox at City Hall, 2580 Shaughnessy St., Port Coquitlam BC, V3C 2A8.

