

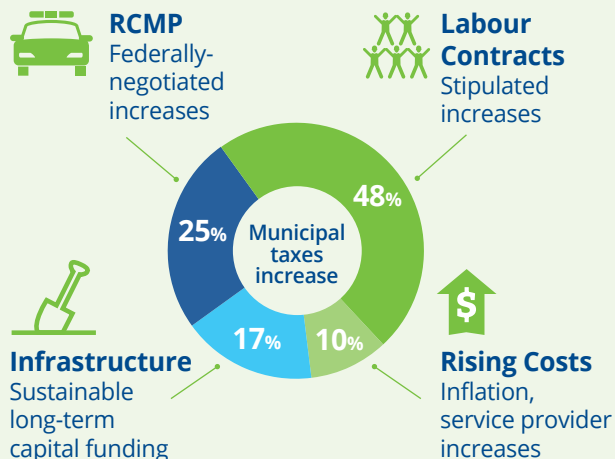
YOUR CITY, YOUR SAY

# GIVE US YOUR FEEDBACK BY JAN. 26

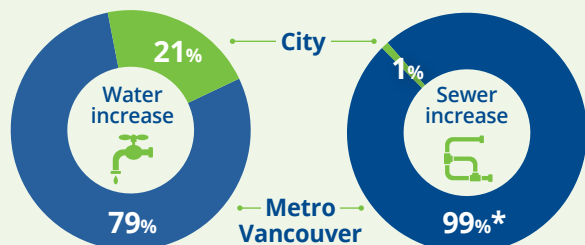
## SOURCES OF 2025 INCREASES

Most of the increases for 2025 are beyond the City's control. See page 3 for tax impact figures.

### PROPERTY TAXES



### UTILITY LEVIES



\* Includes share of North Shore Wastewater Treatment Plant cost overruns (\$84 per household).



Left to right: Cllr. Steve Darling, Cllr. Nancy McCurrach, Cllr. Dean Washington, Mayor Brad West, Cllr. Darrell Penner, Cllr. Paige Petriw, Cllr. Glenn Pollock.

## Message from Council

Port Coquitlam is once again working hard to shield taxpayers from rising costs – many of them beyond our control, as you can see from the graphic to the left.

Our 2025 draft budget includes a proposed property tax increase of \$95.82 (4.3 per cent) – one of the lowest in the region – which we achieved through our continued focus on getting the basics right, and by seeking out alternate revenue sources and efficiencies wherever possible. At the same time, we're remaining responsive to community needs and delivering a high standard of service in areas such as parks and waste management, which have earned widespread recognition across the region.

Port Coquitlam taxpayers can be assured that their City and Council are doing their due diligence on the community's behalf, now and in the future.

We'd love to hear from you. Learn about our 2025 budget here and online, and then submit the printed or online survey by Jan. 26. Residents will be entered to win a \$150 gift certificate for a local business of their choice.

*BW*  
Mayor Brad West

Give your feedback online or in attached survey by Jan. 26

[portcoquitlam.ca/2025budget](https://portcoquitlam.ca/2025budget)

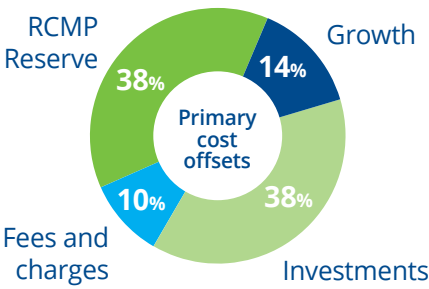
2025 OPERATING BUDGET \$121.4 MILLION

TAKING ACTION TO REDUCE TAXPAYER IMPACT

The annual budget pays for a wide variety of City services. Faced with rising costs across the board, the City has focused on maintaining existing service levels and taxpayer affordability in 2025.

To further reduce the impact on taxpayers, the City actively sought out savings and alternate revenue sources, including the use of reserve contributions, adjustments to investment revenue, department efficiencies, and tax revenue from new development (growth).

The City offset \$1.3 million+ in costs, reducing the proposed tax increase by about 1.6 per cent.



**GLASS PICKUP**  
Based on long-time resident requests, curbside glass pickup begins in January 2025 for homes that pay the solid waste levy: [portcoquitlam.ca/glass](https://portcoquitlam.ca/glass).



**INFRASTRUCTURE**  
The City sets aside a percentage of taxes each year to ensure sustainable long-term funding for capital projects.

2025 CAPITAL BUDGET \$37.5 MILLION

Council adopted a 2025-2026 Capital Budget that invests \$37.5 million in 2025 and \$26 million in 2026 in a variety of capital improvements and infrastructure renewal.

FLOOD PROTECTION

Flood protection is a significant priority for the City. The Capital Plan has dedicated about \$14.4 million in 2025 and \$11.5 million in 2026 to flood protection, including upgrades of pump stations, improved drainage and culverts in flood-prone areas.

Related activities in 2025 include:

- New flood protection program
- Design of Coast Meridian Road culvert
- Design of Cedar Drainage Pump Station
- Upgrades to Maple Creek Drainage Pump Station



Flood protection includes Maple Creek Drainage Pump Station

ADDITIONAL 2025 CAPITAL INVESTMENT HIGHLIGHTS

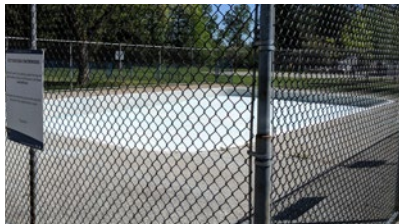
For more information about current capital projects, visit [portcoquitlam.ca/capitalprojects](https://portcoquitlam.ca/capitalprojects).



Leigh Square upgrades



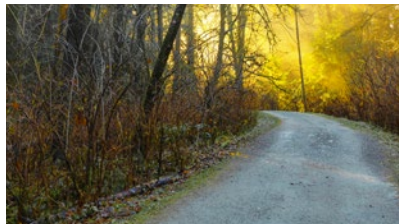
Kingsway Avenue improvements



Sun Valley Pool upgrades



Playground and dog park upgrades



Trail network expansion



Sidewalks and pedestrian safety



# WHAT WILL I PAY (PROPOSED) IN 2025?

## ALL PROPERTY TYPES

**+ 4.3% municipal  
property taxes  
in 2025**

### PROPERTY TAXES

Municipal property taxes for the average Port Coquitlam home (assessed at \$1,108,776) are proposed to increase in 2025 by \$95.82 – one of the lowest proposed increases in the region. A similar percentage increase is proposed for business taxes.

These figures do not include taxes from the Province of BC and other agencies that also appear on the annual property tax bill and are out of the City's control.

### UTILITY LEVIES

A significant portion of water and sewer utility increases for 2025 are related to Metro Vancouver charges for regional services.

### PROPERTY ASSESSMENTS

These figures are based on 2024 property assessment values. See article on the back about the potential impact of a property's assessed value.

## Municipal Property Taxes and Utilities for Average Port Coquitlam Home Assessed at \$1,108,776

	2024	\$ Change (Tax)	% Change (Tax)	Proposed 2025
<b>PROPERTY TAXES</b>				
General City & Infrastructure	\$1,884.09	\$63.98	2.87%	\$1,948.07
RCMP	\$339.22	\$31.84	1.43%	\$371.06
<b>TOTAL</b>	<b>\$2,223.32</b>	<b>\$95.82</b>	<b>4.30%</b>	<b>\$2,319.13</b>
<b>UTILITIES</b>				
Water (City)	\$180.25	\$10.64	1.48%	\$190.89
Water (MV*)	\$310.86	\$24.60	5.70%	\$335.46
<b>TOTAL</b>	<b>\$491.11</b>	<b>\$35.24</b>	<b>7.18%</b>	<b>\$526.35</b>
Sewer (City)	\$123.79	\$7.77	0.36%	\$131.56
Sewer (MV*)	\$271.96	\$114.84	30.62%	\$386.80
<b>TOTAL</b>	<b>\$395.75</b>	<b>\$122.61</b>	<b>30.98%</b>	<b>\$518.36</b>
<b>Solid Waste**</b>	<b>\$247.34</b>	<b>\$14.59</b>	<b>4.71%</b>	<b>\$261.93</b>

\* Metro Vancouver Regional District. \$84 of sewer increase relates to cost overruns for North Shore Wastewater Treatment Plant.

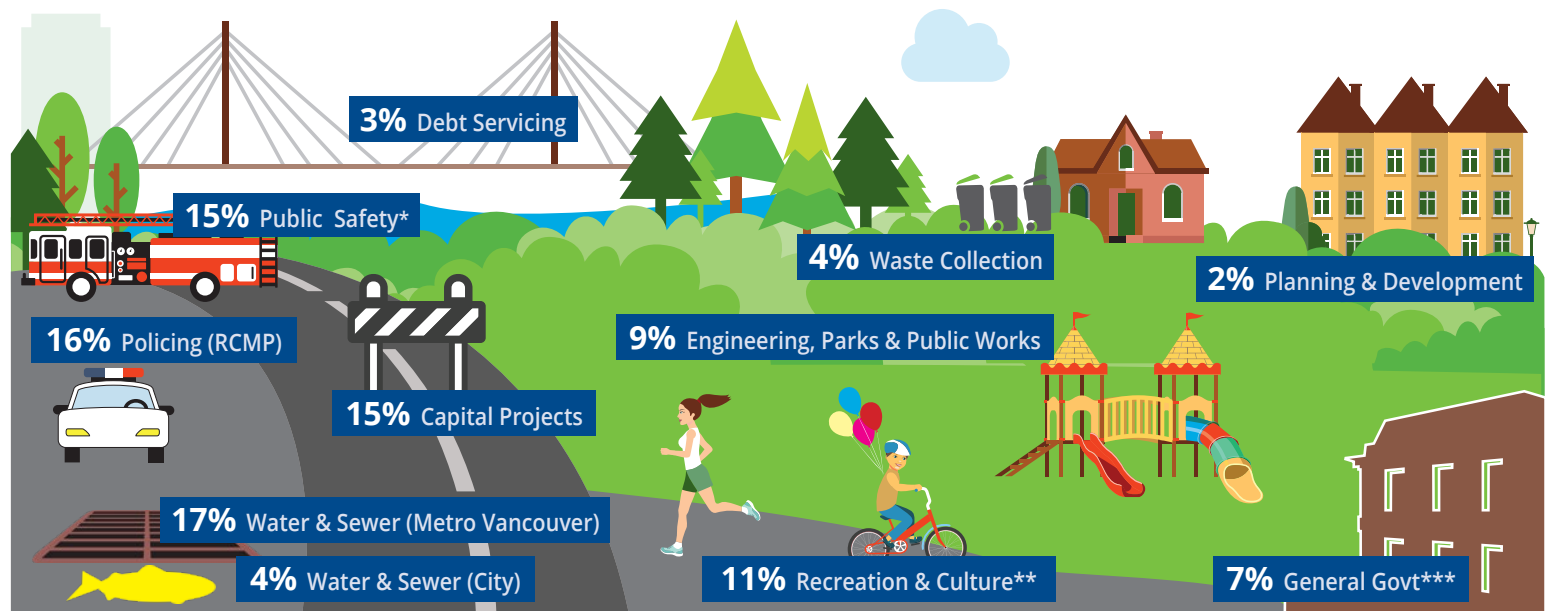
\*\* For homes receiving City waste services.

### Prepayment Program – Pay Monthly!

Pay property taxes and utilities in easy monthly installments: [portcoquitlam.ca/prepayment](https://portcoquitlam.ca/prepayment).

**Est. 2025  
monthly:  
\$302.15\*\***

# WHERE DO MY TAXES AND LEVIES GO?



\* Includes Fire, Bylaw Enforcement, Community Policing

\*\* Includes library

\*\*\* Includes Finance, HR, IT, Corporate Office, Licensing

Info & online feedback

[portcoquitlam.ca/2025budget](https://portcoquitlam.ca/2025budget)

# PROVIDE FEEDBACK BY JAN. 26 FOR A CHANCE TO WIN!

Help shape City services and decisions. Port Coquitlam residents who complete the survey by Jan. 26 will be entered in a draw for a \$150 gift card to a licensed local business of their choice.



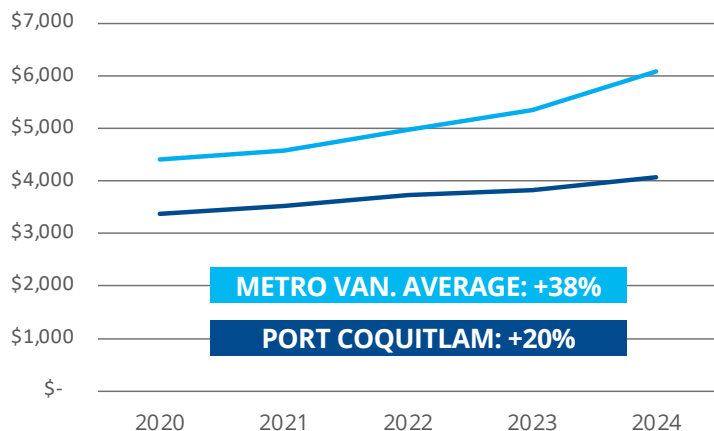
- ▶ **Online information and feedback:** [portcoquitlam.ca/2025budget](https://portcoquitlam.ca/2025budget)
- ▶ **Submit enclosed form:** [budget@portcoquitlam.ca](mailto:budget@portcoquitlam.ca), or by mail or the dropbox at City Hall, 2580 Shaughnessy St., Port Coquitlam BC, V3C 2A8

## HOW DOES PORT COQUITLAM COMPARE?

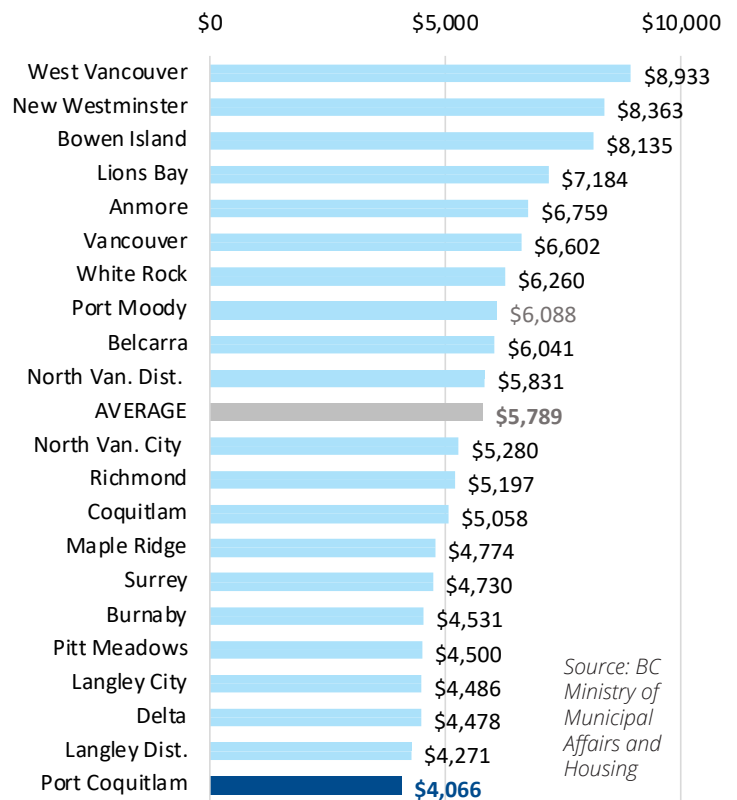
Port Coquitlam has an established track record of lower-than-average property taxes and utilities compared to other municipalities in Metro Vancouver, and is on track to continue that trend in 2025 with one of the lowest proposed tax increases in the region.

Over the past five years, taxes and utilities in Port Coquitlam have increased **just over half** of the regional average.

### Taxes and utilities: Port Coquitlam vs. Metro Vancouver average (2020-2024)



### Taxes\* and utilities in Metro Vancouver (2024)



Source: BC Ministry of Municipal Affairs and Housing

\* Municipal portion of property tax

## HOW WILL MY ASSESSMENT AFFECT MY TAXES?

A property's assessed value determines its share of taxes. The assessments provided by BC Assessment each January indicate how much Port Coquitlam property assessments increased or decreased from the prior year.

Properties whose value has increased or decreased more than other typical properties of the same type will experience a tax rate that differs from the average. For more details, see the assessment mailed to you in January.

If your assessment either **rises more or decreases less** than the City average = your 2025 property tax increase will be **higher** than the average

**AVERAGE ASSESSMENT CHANGE ACROSS THE CITY (SEE YOUR BC ASSESSMENT NOTICE)**

If your assessment either **rises less or decreases more** than the City average = your 2025 property tax increase will be **lower** than the average

Info & online feedback

[portcoquitlam.ca/2025budget](https://portcoquitlam.ca/2025budget)