

2026 May Day Parade Entrant Information

Date: Saturday, May 9, 2026

Parade time: 11:00 a.m. to 1:00 p.m.

After the parade: Party in the Square (free family-friendly activities & entertainment)

Register/entrant info: portcoquitam.ca/maydayparade

Arrival, assembly, and street closures

- **Street closures begin:** 9:00 a.m.
- **Assembly times:**
 - **Floats and vehicles:** 9:00 a.m.
 - **All other entries:** 9:30 a.m.
- Arrive, park, and check-in with the Parade Marshal on your assigned street to receive your Entry Placement Card.

Parade placement

- Find your entry on the parade placement list (online).
- **Your placement will include:**
 - A letter (assigned assembly street)
 - A number (line-up order on that street)

Float and vehicle requirements

Royal Canadian Mounted Police may conduct vehicle checks — please ensure vehicles are properly licensed and insured.

Vehicles/float tow units must:

- Be safe and roadworthy (good brakes, clear driver visibility, proper ventilation)
- Be fully fuelled and in good working order (gas, oil, water, battery, tires)
- Carry a dry chemical fire extinguisher (minimum 5 lb)
- Have exhaust properly protected/isolated where near decorations (heat shielding)

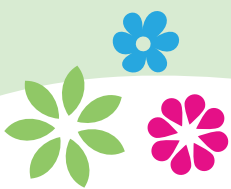
Size limits (must not exceed):

- **Width:** 8 ft
- **Height:** 12 ft
- **Length:** 35 ft (single vehicle)

Port Coquitlam Fire and Emergency Services may conduct inspections on parade morning. Responsibility: The driver is responsible for the float/vehicle at all times (assembly and along the route). Ensure anyone riding on a float is properly secured.



**If you have any questions regarding your parade entry or
require additional general information, please contact us at 604.927.5388.**



During the parade

- No alcohol permitted during the parade
- No political material/messages may be distributed
- Keep performances to 30 seconds in front of the reviewing stand
- Maintain 10 metres spacing between entries (avoid gaps larger than 10 metres)
- Do not throw candy/treats (safety risk)

End of parade and dispersal

- Follow Parade Marshal direction to disperse north or south on Tyner.
- Join post-parade activities at Terry Fox Hometown Square (Party in the Square, adjacent to the Port Coquitlam Community Centre – 2150 Wilson Avenue).

Parking (entrants)

Parking available at:

- Central Elementary School
- West Coast Express lot
- No parking on assembly streets.

Washrooms

Washrooms are available near:

- Central Elementary
- Leigh Square
- Shaughnessy & Welcher
- Port Coquitlam Community Centre

Judging and selection criteria

Judging information:

- Floats, decorated vehicles, and walking units: Judging is conducted before and during the parade.
- Bands, marching units, and drill teams: Judging takes place during the parade on the route.
- Judges' decisions are final.

Safety note for all entrants

- No throwing candy or treats – it creates a safety risk for spectators and participants.

Selection criteria

- Bands
- Department
- Dress
- Quality of playing

Marching units and drill teams

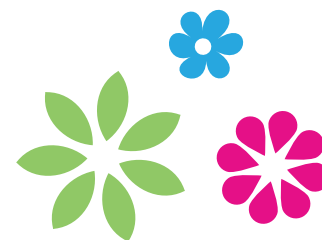
- Dress
- Precision
- Department
- Quality of marching

Floats / decorated vehicles / walking groups

- Float workmanship
- Imagination
- Animation
- Costumed personnel
- Float design
- Overall impression
- Colour
- Theme

Awards and results

- Award winners will be contacted by email.
- Results will be posted online (City channels/website).



PoCo's Spring Festival

