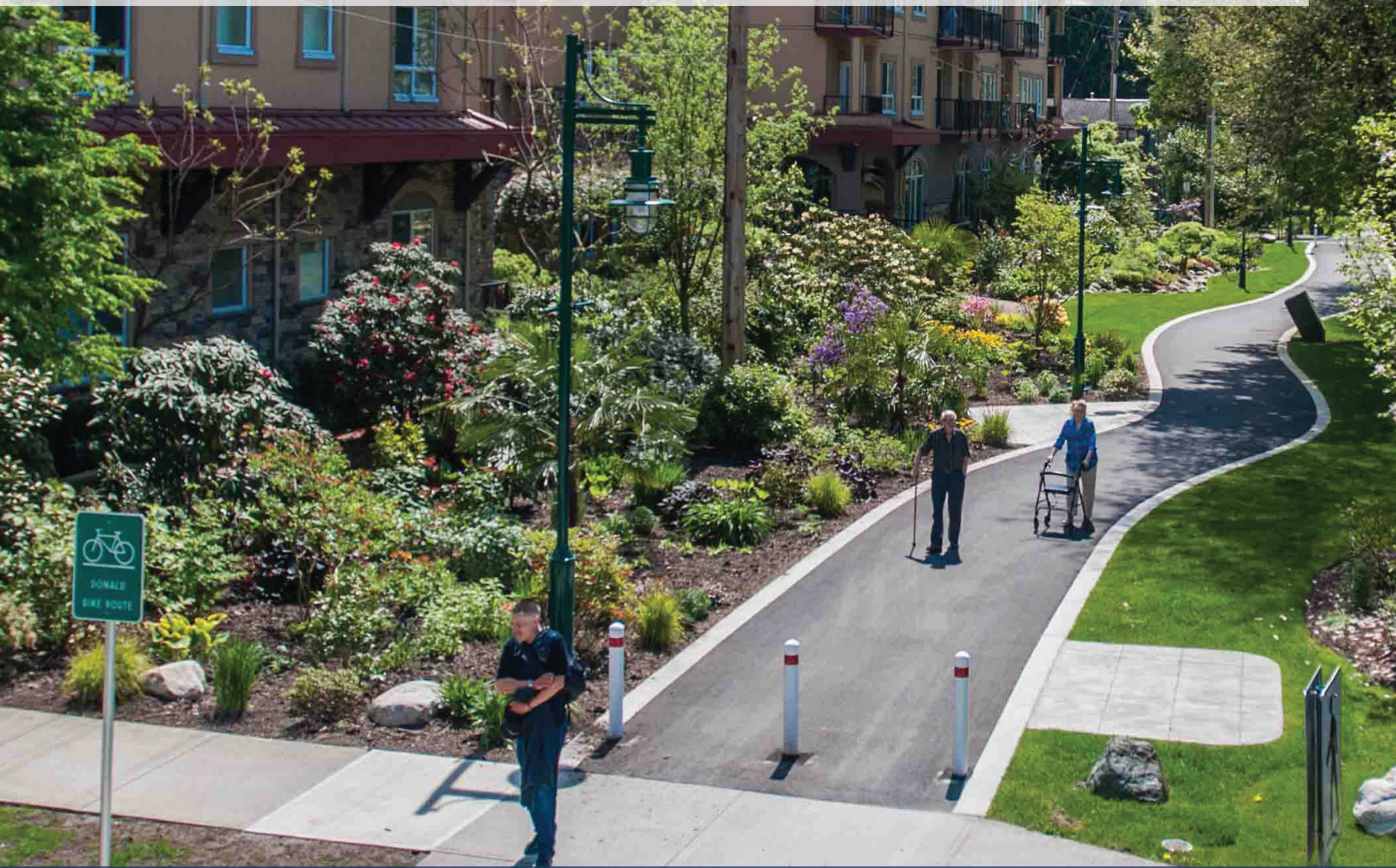


# Social Housing & Services Resource Guide





# Table of Contents

Introduction 3  
Definitions 4

## **HOUSING AND RECOVERY SERVICES 5**

Affordable Housing 5  
Seniors Housing Facilities 6  
Supportive Housing 8  
Recovery Services 9

## **SOCIAL AND COMMUNITY SERVICES 10**

Youth and Family Services 10  
Health and Medical Services 12  
Other Community Services 14  
Housing And Recovery Services 15  
Employment And Immigration Services 16  
City of Port Coquitlam Services 17  
Additional Services 18

# Introduction

The Social Housing & Services Resource Guide includes existing affordable housing, seniors housing, supportive housing and group homes and recovery services. A comprehensive list documenting government and non-profit services and programs available to the community is also provided.

## **Disclaimer**

The materials and information provided in this document have been assembled by the City of Port Coquitlam and are intended for informational purposes only. As this information is continually changing, services may now be temporarily postponed by COVID-19. Please follow up with the City or service provider directly for more information.

# Definitions

(Based on definitions from Canadian Mortgage & Housing Corporation, BC Housing, Community Care and Assisted Living Act, and Family Caregivers of BC)

**Assisted Living:** A type of housing for seniors and people with disabilities that includes on-site hospitality and personal-care support services.

**Affordable (housing):** Housing is considered affordable when 30 per cent or less of your household's gross income goes towards paying for your housing costs.

**Community Care Facility:** Includes child day care and residential care facilities for children, youth, and adults. For persons with developmental disabilities, mental health disorders or brain injuries. Facilities may also provide detoxification and intensive treatment for persons with substance use disorders..

**Complex Care (Long term care):** Facility that provides 24 hour skilled nursing care and supervision for people who are no longer able to care for themselves. Staff members administer medications and assist residents with daily activities such as eating, bathing and dressing.

**Household (core):** A core household is an applicant, spouse (if applicable) and dependent children.

**Independent Living:** A type of housing program for seniors and people with disabilities that includes on-site hospitality and personal-care support services.

**Rent-Geared-to-Income (RGI):** Residents living in subsidized housing pay no more than a set percentage (usually 30 per cent) of gross household income toward the rent or housing charge; thus, rent is geared to income. BC Housing provides subsidies to make up the difference between the Tenant Rent Contribution and the actual cost of operating the units.

**Subsidized Housing:** A type of housing for which the provincial government provides financial support or rent assistance

**Supportive Housing:** A type of housing that provides on-site supports and services to residents who cannot live independently.

**Housing Provider:** The organization responsible for providing or managing housing, which may be a non-profit society, a housing co-operative, a municipal corporation, or BC Housing.

# HOUSING AND RECOVERY SERVICES

## Affordable Housing

(Includes non-profit and rent supplement)

Development	Total Units	Subsidized Units	Housing Form	Built	Rental Structure	Housing Provider	Additional Notes
Chelsea Estates (2435 Lobb Ave.)	56	56	Townhouse	1991	Subsidized (RGI)	New Chelsea Society	On-site daycare centre
Cranberry Court (2275 Shaughnessy St.)	22	22	Apartment	1989	Subsidized (RGI)	43 Housing Society	
Meridian Village (3156 Coast Meridian Rd.)	202	172 (30 seniors)	Townhouse	1976	Market and subsidized (15% RGI)	Metro Vancouver Housing Corp.	
Reynard Park (3165 Fox St.)	32	32	Apartment	1998	Market and subsidized (RGI)	Red Door Housing Society	12 market rental units where BC Housing does not track tenants.
River Woods (2466 Gately Ave.)	111	107 (4 seniors)	Apartment & Townhouse	1982	Market and Subsidized (RGI)	Affordable Housing Advisory Association	
Shaughnessy Co-operative (2083 Shaughnessy St.)	25	25	Townhouse	1982	Co-op participation, co-op purchase	Shaughnessy Housing Co-operative	
Stewart House (2213 Prairie Ave.)	31	18 (13 seniors)	Townhouse	1993	Subsidized (RGI)	Stewart Housing Society	
Tamarack Terrace (3534-3550 Woodland Dr.)	83	41 (42 seniors)	Apartment & Townhouse	1992	Subsidized (RGI)	43 Housing Society	
Vincent Place (1638 Prairie Ave.)	38	38	Townhouse	1994	Subsidized (RGI)	Affordable Housing Charitable Association	
Willow Place (2145 Mary Hill Rd.)	40	40	Townhouse	1990	Subsidized (RGI)	43 Housing Society	

## Upcoming Developments

<b>The Alex</b> (2115-2127 Prairie Ave.)	83	83	Apartment & Townhouse	TBD	1/3/ shelter rates; 1/3 RGI; 1/3 low end of market	Atira Women's Resource Society	Women and children and for women-headed families
---	----	----	-----------------------	-----	--	--------------------------------	--

## Seniors Housing Facilities

(Includes non-profit, private, independent living & complex care)

Development	Units	Subsidized Units	Housing Form	Built	Rental Structure	Housing Provider	Additional Notes
<b>Amica at Mayfair</b> (2267 Kelly Ave. & 2266 Atkins Ave.)	118	0	Apartment	2000	Market (private pay)	Sienna Senior Living	40 registered assisted living, Independent living
<b>Cedar Terrace</b> (2233 Wilson Ave.)	40	40	Apartment	1988	Subsidized (RGI)	43 Housing Society	Independent living
<b>Dogwood Seniors' Housing Complex</b> <b>Dogwood Manor</b> (3155 Seymour St.)	24	24	Apartment	1960	Subsidized (RGI)	Port Coquitlam Senior Citizens Housing Society	Independent living
<b>Dogwood Seniors' Housing Complex</b> <b>Dogwood Place</b> (3125 Seymour St.)	31	31	Apartment	1973	Subsidized (RGI)	Port Coquitlam Senior Citizens Housing Society	Independent living
<b>Hawthorne Seniors Care Community</b> (2111 Hawthorne Ave.) Including the Tower, Cottages & Lodge	201	201	Apartment	1973	Subsidized (RGI)	Port Coquitlam Senior Citizens Housing Society	131 complex care 70 registered assisted living  Tower: 70 units Cottages: 56 units Lodge: 75 units
<b>Meridian Village</b> (3156 Coast Meridian Rd.)	202	30	Townhouse	1976	Market and subsidized (15% RGI)	Metro Vancouver Housing Corp.	Independent living
<b>Nicola Lodge</b> (2240 Hawkins St.)	251 (256 residents)	238 (18-private pay)	Apartment	2016	Market and Subsidized (RGI)	Sienna Senior Living	212 - Complex care 26 - mental health (Fraser Health)
<b>Parks Place Shaughnessy Seniors</b> (2250 Wilson Ave.)	60	0	Apartment	1989	Market (private pay)	Park Place Seniors Living	Complex Care

River Woods (2466 Gately Ave.)	111	4	Apartment & Townhouse	1982	Market and Subsidized (RGI)	Affordable Housing Advisory Association	Independent living
R.J. Kent: The Residences (2675 Shaughnessy St.)	54	25	Apartment	2008	Market (private pay)  Subsidized (RGI)	Royal Canadian Legion	Independent living
Robert Hope Manor (2340 McAllister Ave.)	52	52	Apartment	1989	Subsidized (RGI)	United Seniors Housing Society	Independent living
Stewart House (2213 Prairie Ave.)	31	13	Townhouse	1993	Subsidized (RGI)	Stewart Housing Society	Independent living
The Royale Astoria (2245 Kelly Ave.)	135	0	Apartment	2010	Market (private pay)	Astoria Retirement Inc.	45 registered assisted living
Tamarack Terrace (3534-3550 Woodland Dr.)	83	42	Apartment & Townhouse	1992	Subsidized (RGI)	43 Housing Society	

### Upcoming Developments

Dogwood Seniors' Housing Complex (3155 Seymour St.)	41	41	Apartment	2020	Subsidized (RGI)	Port Coquitlam Senior Citizens Housing Society	Independent living
---	----	----	-----------	------	---------------------	---	-----------------------

# Supportive Housing (Group care home)

Development	Beds	Housing Form	Service Provided	Housing Provider	Additional Notes
Barberry House	10	Single Family	Community Care Facility	Azimuth Health Program Management	Adult Care
Barclay Care Home	10	Single Family	Community Care Facility	New Vision Development Inc.	Private mental health facility
Gemini House	4	Single Family	Community Care Facility	BC Housing (Milieu Family Services)	Adult Care
Hyde Creek	4	Duplex	Community Care Facility	Fraserside Community Services Society	Staffed 24/7
Iris House	10	Single Family	Community Care Facility	New View Society	Staff support 7 hours per day
Larkin House	5	Single Family	Community Care Facility	Cheshire Homes Society of BC	Ambulatory Care
Larkspur House	4	Single Family	Community Care Facility	Kinsight Community Society	Varying staff support based on location
Manning House	5	Single Family	Community Care Facility	Kinsight Community Society	Varying staff support based on location
Maplewood Manor	20 units	Apartment	Community Care Facility	New View Society	Staff support 1 hour per day Independent living
Mary Hill House	5	Single Family	Community Care Facility	New View Society	Staff support 3 hours per day
McRae House	6	Duplex	Community Care Facility	New View Society	Staff support 3 hours per day
Salisbury House	8	Apartment	Community Care Facility	Fraserside Community Services Society	Staffed 24/7
Sefton House	2	Single Family	Community Care Facility	BC Housing (Milieu Family Services)	Adult Care
Wellington House	5	Single Family	Community Care Facility	Kinsight Community Society	Varying staff support based on location



Patricia House	5	Single Family	Community Care Facility	New View Society	Staff support 3 hours per day
Rindall House	5	Single Family	Community Care Facility	New View Society	Staff support 3 hours per day

## Recovery Services (Group care home)

Development	Beds	Housing Form	Service Provided	Housing Provider	Additional Notes
Hope for Freedom House 1	10	Single Family	Supportive Recovery Home	Hope for Freedom	Office for housing and food coordination
Hope for Freedom House 2	8	Single Family	Supportive Recovery Home	Hope for Freedom	
Hope for Freedom House 3	7	Single Family	Supportive Recovery Home	Hope for Freedom	
Inversions House 1	21	Single Family	Supportive Recovery Home	Innervations	15 beds allocated to Fraser Health Treatment program for men

# Social and Community Services

\*Some service providers span across multiple categories

YOUTH AND FAMILY SERVICES			
Organization	Description / Services	Demographic	Contact Information
Access Youth Outreach Services Society	Youth outreach, empowerment and career building. The Bus is a mobile drop-in centre that provides mentorship and engagement to at-risk youth.	Youth	Tel: 604.525.1888 Box 6, 2601 Loughheed Hwy. Coquitlam, BC V3C 4J2  The Bus: 604.781.6671
Child & Youth Mental Health Offices	Provides services for children, youth, and their families who are affected by eating disorders. Service involves assessment and treatment.	Children/Youth/ Family	Tel: 604.469.7600 3003 St Johns Street, Port Moody, BC V3H 2C4
Children & Youth with Special Needs	Services for children and youth with special needs in the Tri-Cities.	Children/Youth	Tel: 604-528-3950 204 Blue Mountain Street Coquitlam, BC V3K 4H1
Guardianship & Adoption Services	Provides placement adoption services and guardianship services.	Children/Youth/ Family	Tel: 604.660.0706 102-4430 Halifax Street Burnaby, BC V5C SR4
Ministry of Children & Family Development (MCFD)	Provides child protection services, mental health services, guardianship and adoption services, residential resources, services for people with disabilities, and youth services.	Children/Youth/ Adults/Family	Centralized Intake & Screening (24-hour): Tel: 1.800.663.9122  Tel: 604.933.2073 504 Cottonwood Avenue, Coquitlam, BC V3J 2R4
North Fraser Youth Day Treatment Program	Offers comprehensive psychiatric treatment and educational programming to youth and their families. Programs includes individual and family therapy, group therapy, educational programming and medical management.	Youth/ Family	Tel: 604.933.2533 2062 Manning Avenue Port Coquitlam, BC V3B 1L6
Plea Community Services Society of BC	Delivers unique services, tailored to individual strengths and needs, to children, youth, adults and families facing significant challenges so that they may live fulfilling lives within their communities.	Children/Youth/ Adults/Family	Tel: 604.871.0450 3894 Commercial Street, Vancouver, BC V5N 4G2

Purpose Society Mobile Health Van	Serves vulnerable and street-engaged populations by providing access to: harm reduction supplies, take home Naloxone kits and training, drug checking, hygiene supplies and referrals to community resources.	Youth/Adults	Tel: 604.526.2522 (Purpose Society)  Tel: 604.351.1885 (Van)
SHARE Family & Community Services	Non-profit, community-based organization providing: <ul style="list-style-type: none"> <li>• Resources to help newcomers in the Tri-Cities community.</li> <li>• Early Intervention Therapy for children under five years of age, substance use prevention education in schools and gambling counselling,</li> <li>• Peer support group for young women</li> <li>• Speech and language programs</li> <li>• Crisis and Information services</li> </ul>	Children/Youth/ Adults/ Family	Administrative Offices: Tel: 604.540.9161 104-3020 Lincoln Avenue, Coquitlam BC V3B 6B4  Counselling Services Offices: Tel: 604.936.3900 2615 Clarke Street, Port Moody, BC V3H 1Z4
Short Term, Assessment, Response, Treatment Team (START)	Provides mental health crisis intervention for children and youth in mental, emotional, or physical crisis. Services include mental health and risk assessment, short-term individual and or group therapy, family support, information, and referrals.	Children/Youth/ Family	Tel:1-844.782.7811 205 Newport Drive, Port Moody, BC V3H 5C9
Spirit of the Children Society	Indigenous non-profit society working to empower Indigenous families by providing support through resources and services.	Children/Youth/ Adults/ Family	Tel: 604.524.9113 201 – 768 Columbia St. New Westminster, BC V3M 1B4
Tri-Cities East Neighbourhood Centre (Child & Family Services)	Offers intensive in-home parent support and education programs to families and children from birth to age 15 who are experiencing difficulties. Services include developing skills, setting goals, and locating community resources.	Children/Family	Tel: 604.944.2500 2062 Manning Avenue Port Coquitlam, BC V3B 1L6
Tri-City Transitions	Non-profit aimed to support people and families experiencing intimate partner violence. Provides an emergency shelter and social support for women and their children fleeing intimate partner violence.	Adults/Family	Tel: 604-941-7111 402-2071 Kingsway Ave, Port Coquitlam, BC V3C 6N2
Westcoast Family Centres	Provides family resource programs, parent educational workshops and support groups, and parent ambassador programs.	Children/Youth/ Adults/ Family	Tel: 604.944.2500 2062 Manning Avenue Port Coquitlam, BC V3B 1L6

## HEALTH AND MEDICAL SERVICES

Organization	Description / Services	Demographic	Contact Information
All Care Walk-in Clinic		Youth/Adults/ Family	111-1465 Salisbury Ave., Port Coquitlam, BC V3B 6J3 Tel: 604.942.2266
Community Integration Services Society	Day services to assist individuals with disabilities who wish to be active and involved in their community. Inlet Enterprises is a senior's community-based day program.	Youth/Adults/ Family	Tel: 604.461.2131 2175 Mary Hill Road Port Coquitlam, BC V3C 3A2
Developmental Disabilities Mental Health Services	Provides specialized mental health community services for individuals with a developmental disability and who have a mental illness and or challenging behaviour.	Adults/Family	Tel: 604.777.8475 207-2248 Elgin Avenue Port Coquitlam, BC V3C 2B2
Eagle Ridge Hospital Emergency		Youth/Adults/ Family	475 Guildford Dr., Port Moody, BC V3H 3W9 Tel: 604.461.2022
Health Link BC (24/7 Health Advice)	Medically-approved information on over 5000 health topics, symptoms, medical tests, medications, and tips for healthy eating and lifestyle choices.	Youth/Adults/ Family	Tel: toll free 8.1.1
Kinsight	Kinsight works alongside families of children, youth and adults with developmental delays and disabilities to set and achieve goals that will increase opportunities for growth, development and greater independence.	Youth/Adults/ Family	Tri-Cities Children's Service: Tel: 604.528.3950 204 Blue Mountain St., Coquitlam, BC V3K 4H1  Tri-Cities Infant Development Program: Tel: 604.525.6123 200 – 25 King Edward St., Coquitlam, BC V3K 4S8  Community Inclusion: Tel: 604.945.6811 1551 Salisbury Avenue, Port Coquitlam, BC V3B 8C9



New View Society	Promotes recovery in a friendly, safe and supportive environment for individuals affected by mental illness in the Tri-Cities. Provides housing, employment, social and personal growth opportunities.	Youth/Adults/ Family	Tel: 604.941.3222 2050 Mary Hill Road Port Coquitlam, BC V3C 2Z8
Real Canadian Superstore Walk-in Clinic		Youth/Adults/ Family	3000 Lougheed Hwy., Coquitlam, BC V3B 1C5 Tel: 604.468.6718
Royal Canadian Legion	Transition programs where former service personnel can receive support for trauma-related stress, career transitions and family relationships. It is a group-based opportunity for former members of the Canadian Forces & RCMP.	Adults	Tel: 604.942.8911 2675 Shaughnessy St, Port Coquitlam, BC V3C 0B9
The Cheshire Homes Society of British Columbia	Support individuals with disabilities to achieve independence through innovative services, education and community integration. Offer transitional services to clients with acquired brain Injuries and medically dependent survivors.	Youth/Adults	Tel: 604.540.0686 101A-3920 Norland Ave. Burnaby, BC V5G 4K7
Tri-Cities Mental Health & Substance Use Centre	Services available include assessment, treatment, therapy, referrals to supportive housing, residential and community support services, transition of care between services, older adult programs, crisis intervention and peer support.	Youth/Adults/ Family	Tel: 604.777.8400 1-2232 Elgin Avenue, Port Coquitlam, BC V3C 2B2
Tri-Cities Public Health Unit (Fraser Health Authority)	Newport Public Health Services include but are not limited to: immunizations, pregnancy and early motherhood care, early childhood development, speech therapy, hearing clinics, nutrition, dental care, youth clinics and harm reduction.	Children/Youth/ Adults/Family	Tel: 604.949.7200 200-205 Newport Drive Port Moody, BC V3H 5C9

## OTHER COMMUNITY SERVICES

Organization	Description / Services	Demographic	Contact Information
BC 211 - Shelter and Street Helpline	Free, confidential phone service for information and referral regarding community resources related to homelessness, including shelter bed availability, meal services, financial assistance, medical assistance, mental health services, addiction programs, transition houses, legal help, free/low-cost goods, and housing search assistance.	Youth/Adults/ Family	Tel: 2.1.1   bc211.ca
Canadian Bar Association British Columbia: Dial-a-Law	Non-profit society in British Columbia that provides public legal education. Dial-A-Law is a starting point for information on the law for British Columbians.	Youth/Adults/ Family	Tel: 604.687.4680
Continuing Legal Education Society of British Columbia	Delivers reliable and practical BC-specific legal education and information direct from leading members of the legal community.	Youth/Adults/ Family	Tel: 604.669.3544 500 – 1155 West Pender St. Vancouver, BC V6E 2P4
Port Coquitlam Food Bank	SHARE Family and Community Services Society distributes food to people in need, Offered in partnership with the Port Moody Food Bank, Trinity United Church, and Saint Catherine's Anglican Church. Clients require proof of address and personal information. Food is available every two weeks.	Youth/Adults/ Family	Port Moody Food Bank: Tel: 604.931.2451  Trinity United Church Tel: 604.942.0022 2211 Prairie Avenue Port Coquitlam, BC V3C 3V4
Port Coquitlam Provincial Court Services (Ministry of Attorney General)	Lawyers offer assistance to individuals who have been charged with a crime and don't have a lawyer or qualify for legal aid.	Youth/Adults/ Family	Tel: 604.927.2222 Unit A-2620 Mary Hill Rd. Port Coquitlam, BC V3C 3B2
Salvation Army Thrift Store	Support from local donations provide low cost clothing and household items.	Children/Youth/ Adults/Family	Tel: 604.942.0505 3190-2850 Shaughnessy St. Port Coquitlam, BC V3C 6K5
Tri-Cities Homelessness Task Group	Identify, advocate for and coordinate the actions necessary to prevent and address homelessness in the Tri-Cities and build the capacity of service providers and community organizations to respond effectively.	Youth/Adults	tricityhomelessness@ gmail.com
Trinity United Church	Thrift Store: Offers a source of low-cost items for local families, as well as creating a source of funding for our United Church Women's groups and their charities.  Paul's Place Soup Kitchen: delivering food to those who need a helping hand.  Extreme Weather Shelter: provides safe, warm, dry, overnight shelter and a hot meal for homeless individuals. The Shelter is open when an emergency alert is declared between Nov/March.	Youth/Adults/ Family	Tel: 604.942.0022 2211 Prairie Ave. Port Coquitlam, BC V3B 1V8

Western Canada Society to Access Justice	Provides pro bono lawyers assistance to all persons who cannot obtain legal aid or afford a lawyer.	Youth/Adults/ Family	Tel: 604.482.3195 300-845 Cambie Street Vancouver, BC V6B 4Z9
Wilson Centre Seniors Advisory Association	Provides outreach services to seniors. Offers weekly shop-by-phone grocery service, telephone reassurance and information and referral services.	Adults/Family	Tel: 604.927.7529 2150 Wilson Avenue Port Coquitlam, BC V3C 6J5

## HOUSING AND RECOVERY SERVICES

Organization	Description / Services	Demographic	Contact Information
3030 Gordon Ave.	Emergency Shelter: <ul style="list-style-type: none"> <li>• 30 emergency shelter beds in single private rooms (20 for men and 10 for women)</li> </ul> Transitional Housing: <ul style="list-style-type: none"> <li>• 30 self-contained suites for longer term accommodation</li> </ul> Extreme Weather Response: <ul style="list-style-type: none"> <li>• 3-10 bed dormitories for an additional 30 individuals during periods of severe weather</li> </ul>	Youth/Adults	Tel: 604.474.0435 3030 Gordon Ave, Coquitlam, BC V3C 0E7
BC Housing	Rental Assistance and Program & Subsidized Housing Listing Resource Directory.	Youth/Adults/Family	Tel: 604-433-2218 101-4555 Kingsway, Burnaby, BC V5H 4V8
Hawthorne Care Centre	Operates under a contract with Fraser Health to provide spaces for individuals requiring complex residential care services.	Adults	Tel: 604.941.4051 2111 Hawthorne Ave, Port Coquitlam, BC V3C 1W3
Hope for Freedom	Provides long-term residential supportive recovery for men and women suffering addictions.	Youth/Adults	Tel: 604.464.0475 3237 Liverpool Street, Port Coquitlam, BC V3B 3V5
Innervisions Recovery Society	Safe and structured alcohol and drug rehab center.	Youth/Adults	Tel: 604.468.2032 1937 Prairie Ave, Port Coquitlam, BC V3B 1V5
Ministry of Social Development and Poverty Reduction	Focuses on providing British Columbians in need with a system of supports to help them achieve their social and economic potential.	Youth/Adults/Family	Port Coquitlam Office: Tel: 604.664.0135 B100-2099 Lougheed Hwy Port Coquitlam, BC, V3B 1A8

Opioid Agonist Treatment	Provides people who have an opioid use disorder with treatment using medications.	Youth/Adults	Tel: 604-777-8709 700 - 220 Brew Street Port Moody BC V3H 0E5
--------------------------	---	--------------	---

## EMPLOYMENT AND IMMIGRATION SERVICES

Organization	Description / Services	Demographic	Contact Information
BC Employment and Income Assistance	Provides income assistance, disability assistance, and referral to employment services for individuals who are unemployed, underemployed, awaiting other income, or unable to work.	Youth/Adults	Tel: 1.866.866.0800 B100-2099 Lougheed Hwy. Port Coquitlam, BC V3B 1A8
Immigrant Services Society of BC	Provides a variety of support services for immigrants and refugees to help them get settled, find careers and learn all they need to know about starting their new lives in Canada.	Youth/Adults/Family	Tel: 778.383.1438 200-504 Cottonwood Ave. Coquitlam BC V3J 2R5
S.U.C.C.E.S.S Tri-City Service Centre	Provides services in newcomer settlement, employment, community development, language training, family and youth counselling, affordable housing and seniors care. Programs are delivered in culturally appropriate ways to best meet the needs of their clients.  Programs to help new Canadians settle, families and individuals cope with stresses in life, women and seniors form social networks, children and youth develop social and leadership skills, parents access child development resources and information.	Children/Youth/ Adults/Family	Tel: 604.468.6102  Unit 2058 Henderson Place, 1163 Pinetree Way, Coquitlam, BC V3B 8A9
Tri-Cities Local Immigration Partnership	Meets the needs of newcomers and long-term residents and makes the region one of the most welcoming and inclusive places in Canada. Offers a coordinated approach to information sharing and collaboration to address immigrant integration needs in Tri-Cities.	Youth/Adults/Family	Tel: 604.468.6001 2058-1163 Pinetree Way (Henderson Place), Coquitlam, BC V3B 8A9
WorkBC Employment Services Centre	Offers a range of free services related to employment, skills and training, wage subsidy work experience, personal counselling, and disability supports.	Youth/Adults/Family	Tel: 778.730.0171 2540 Shaughnessy Street, Port Coquitlam, BC V3C 3W4



## CITY OF PORT COQUITLAM SERVICES

Organization	Description / Services	Demographic	Contact Information
Port Coquitlam Community Police Station	Community policing/crime prevention office.	Children/Youth/ Adults/Family	Northside: Tel: 604.927.5451 3312 Coast Meridian Road Port Coquitlam, BC V3B 3N6  Southside: Tel: 604.927.2383 107-2581 Mary Hill Road Port Coquitlam, BC V3C 2A8
Port Coquitlam Development Services	Responsible for overall land use planning and zoning, and for development and building permits including those for social services or social facilities in accordance with City plans and policies.	Children/Youth/ Adults/Family	Tel: 604-927-5442 2580 Shaughnessy Street Port Coquitlam, BC V3C 2A8
Port Coquitlam Emergency Coordinator (Port Coquitlam Fire & Emergency Services)	Services include planning, response, and recovery in emergency/disaster situations in Port Coquitlam.	Children/Youth/ Adults/Family	Tel: 604.927.5466 1725 Broadway Street Port Coquitlam, BC V3C 2M9
Port Coquitlam Recreation Centres	Facilities include pool, racquet and squash courts, weight room, fitness studio, sports hall, teen centre, gymnasium, meeting rooms, food servery, and physiotherapy and massage services.	Child/Youth/ Adults/Family	Hyde Creek Recreation Centre: Tel: 604.927.7946 1379 Laurier Avenue Port Coquitlam, BC V3B 2G9  Port Coquitlam Recreation Centre: Tel: 604.927.7529 2150 Wilson Avenue Port Coquitlam, BC V3C 6J5
Port Coquitlam Youth Services	Youth activity centres are fully supervised and inclusive spaces providing for youth ages 11-18.	Youth	Port Coquitlam Community Centre Games Room  Tel: 604.927.7529 2150 Wilson Avenue Port Coquitlam, BC V3C 3B8
School District 43	Learning resources for students who have moderate to severe difficulties (e.g. severe learning disabilities, mild intellectual disabilities) in learning and adjustment.	Youth/Adults/ Family	Tel: 604.939.9201 550 Poirier St, Coquitlam BC V3J 6A7

# Additional Services

## Meal Programs

Please confirm with the service provider of any potential changes due to COVID-19.

### Meals on Wheels

Service providing home delivery of nutritional meals throughout the Tri-City area using a network of volunteer drivers.

Tel: 604.817.3703

932 Cameron Avenue, Port Coquitlam BC V3C 1J3

### Broadway Church

Meal Program and Food for Families: Serving vulnerable families, individuals and seniors through pre-packaged food hampers.

Tel: 604.817.3703

1932 Cameron Avenue, Port Coquitlam BC V3C 1J3

### Our Lady of Assumption Church: **POSTPONED**

"Come to the Table" Hot Lunch: 4th Saturday of every month.

Tel: 604.942.7808

3141 Shaughnessy Street, Port Coquitlam, BC V3B 4L2

### City Reach Club Freedom

Bagged sandwich meals handed out at Lions Park, Tuesdays at 6pm.

[craigs@cityreach.org](mailto:craigs@cityreach.org)

### Soroptimist International of the Tri-Cities, A Warm Place for Women

A monthly social evening for women in need, hosted by Soroptimist International of the Tri-Cities at the Kinsman Centre, Aggie Park (Shaughnessy and Lougheed) in Port Coquitlam.

[info@soroptimisttricitie.org](mailto:info@soroptimisttricitie.org)