



WASTE SORTING & SERVICES

**Sort it
Right!**

- > 2026 collection calendar and zone map
- > Sorting info and resources
- > Waste service details



2026 COLLECTION CALENDAR

 Organics cart

 Recycling cart

 Glass bin*
single family

 Garbage cart

 Stat holiday

JANUARY 2026

| SUN | MON | TUE | WED | THU | FRI | SAT |
|-----|-----|-----|-----|-----|-----|-----|
| | | | | 1 | 2 | 3 |
| 4 | 5 | 6 | 7 | 8 | 9 | 10 |
| 11 | 12 | 13 | 14 | 15 | 16 | 17 |
| 18 | 19 | 20 | 21 | 22 | 23 | 24 |
| 25 | 26 | 27 | 28 | 29 | 30 | 31 |

FEBRUARY 2026

| SUN | MON | TUE | WED | THU | FRI | SAT |
|-----|-----|-----|-----|-----|-----|-----|
| 1 | 2 | 3 | 4 | 5 | 6 | 7 |
| 8 | 9 | 10 | 11 | 12 | 13 | 14 |
| 15 | 16 | 17 | 18 | 19 | 20 | 21 |
| 22 | 23 | 24 | 25 | 26 | 27 | 28 |
| | | | | | | |

MARCH 2026

| SUN | MON | TUE | WED | THU | FRI | SAT |
|-----|-----|-----|-----|-----|-----|-----|
| 1 | 2 | 3 | 4 | 5 | 6 | 7 |
| 8 | 9 | 10 | 11 | 12 | 13 | 14 |
| 15 | 16 | 17 | 18 | 19 | 20 | 21 |
| 22 | 23 | 24 | 25 | 26 | 27 | 28 |
| 29 | 30 | 31 | | | | |

APRIL 2026

| SUN | MON | TUE | WED | THU | FRI | SAT |
|-----|-----|-----|-----|-----|-----|-----|
| | | | 1 | 2 | 3 | 4 |
| 5 | 6 | 7 | 8 | 9 | 10 | 11 |
| 12 | 13 | 14 | 15 | 16 | 17 | 18 |
| 19 | 20 | 21 | 22 | 23 | 24 | 25 |
| 26 | 27 | 28 | 29 | 30 | | |

MAY 2026

| SUN | MON | TUE | WED | THU | FRI | SAT |
|-----|-----|-----|-----|-----|-----|-----|
| | | | | | 1 | 2 |
| 3 | 4 | 5 | 6 | 7 | 8 | 9 |
| 10 | 11 | 12 | 13 | 14 | 15 | 16 |
| 17 | 18 | 19 | 20 | 21 | 22 | 23 |
| 24 | 25 | 26 | 27 | 28 | 29 | 30 |
| 31 | | | | | | |

JUNE 2026

| SUN | MON | TUE | WED | THU | FRI | SAT |
|-----|-----|-----|-----|-----|-----|-----|
| | 1 | 2 | 3 | 4 | 5 | 6 |
| 7 | 8 | 9 | 10 | 11 | 12 | 13 |
| 14 | 15 | 16 | 17 | 18 | 19 | 20 |
| 21 | 22 | 23 | 24 | 25 | 26 | 27 |
| 28 | 29 | 30 | | | | |

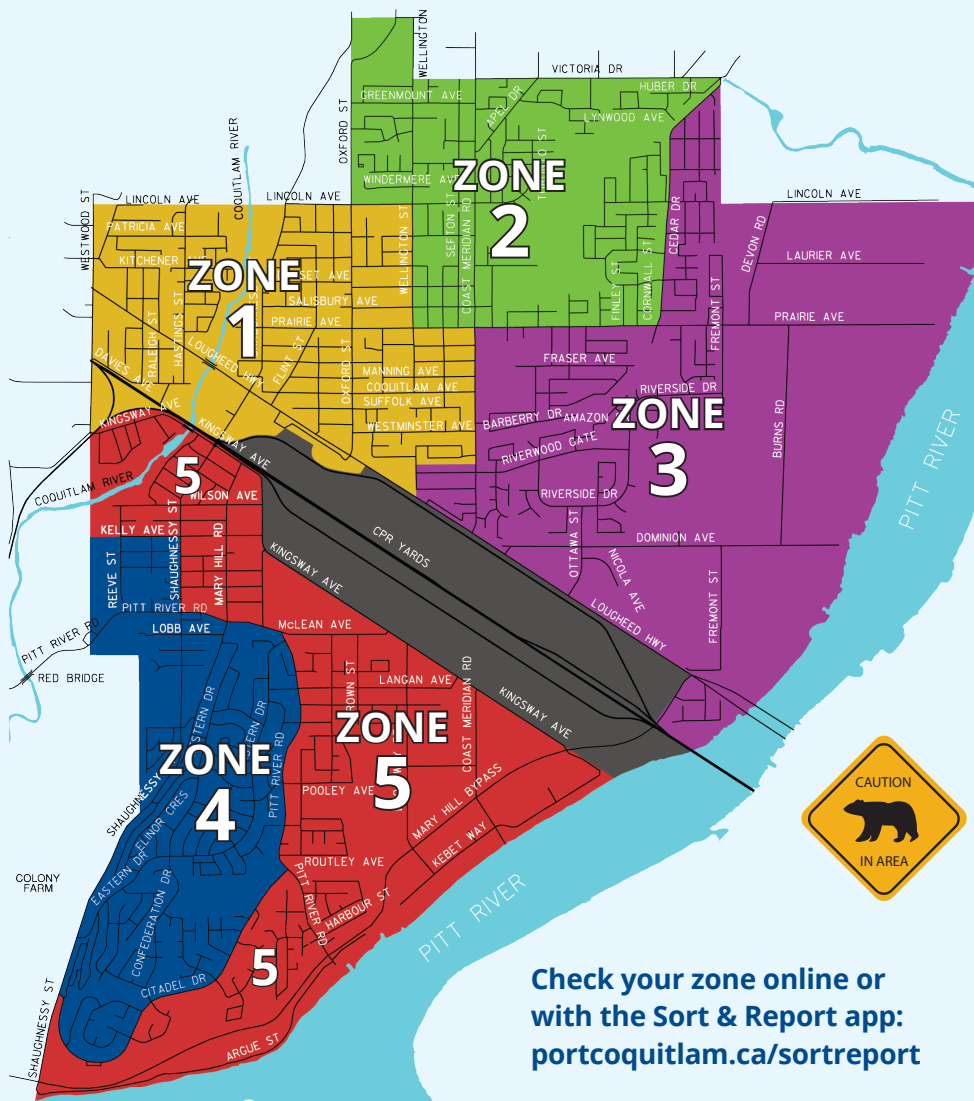
JULY 2026

| SUN | MON | TUE | WED | THU | FRI | SAT |
|-----|-----|-----|-----|-----|-----|-----|
| | | | 1 | 2 | 3 | 4 |
| 5 | 6 | 7 | 8 | 9 | 10 | 11 |
| 12 | 13 | 14 | 15 | 16 | 17 | 18 |
| 19 | 20 | 21 | 22 | 23 | 24 | 25 |
| 26 | 27 | 28 | 29 | 30 | 31 | |

AUGUST 2026

| SUN | MON | TUE | WED | THU | FRI | SAT |
|-----|-----|-----|-----|-----|-----|-----|
| | | | | | | 1 |
| 2 | 3 | 4 | 5 | 6 | 7 | 8 |
| 9 | 10 | 11 | 12 | 13 | 14 | 15 |
| 16 | 17 | 18 | 19 | 20 | 21 | 22 |
| 23 | 24 | 25 | 26 | 27 | 28 | 29 |
| 30 | 31 | | | | | |

* Glass bin pickup shown for single-family homes only. For multi-family homes, glass pickup for all zones is on the Zone 5 day.



Check your zone online or
with the Sort & Report app:
portcoquitlam.ca/sortreport

SEPTEMBER 2026

| SUN | MON | TUE | WED | THU | FRI | SAT |
|-----|-----|-----|-----|-----|-----|-----|
| | | 1 | 2 | 3 | 4 | 5 |
| 6 | 7 | 8 | 9 | 10 | 11 | 12 |
| 13 | 14 | 15 | 16 | 17 | 18 | 19 |
| 20 | 21 | 22 | 23 | 24 | 25 | 26 |
| 27 | 28 | 29 | 30 | | | |

OCTOBER 2026

| SUN | MON | TUE | WED | THU | FRI | SAT |
|-----|-----|-----|-----|-----|-----|-----|
| | | | | 1 | 2 | 3 |
| 4 | 5 | 6 | 7 | 8 | 9 | 10 |
| 11 | 12 | 13 | 14 | 15 | 16 | 17 |
| 18 | 19 | 20 | 21 | 22 | 23 | 24 |
| 25 | 26 | 27 | 28 | 29 | 30 | 31 |

NOVEMBER 2026

| SUN | MON | TUE | WED | THU | FRI | SAT |
|-----|-----|-----|-----|-----|-----|-----|
| 1 | 2 | 3 | 4 | 5 | 6 | 7 |
| 8 | 9 | 10 | 11 | 12 | 13 | 14 |
| 15 | 16 | 17 | 18 | 19 | 20 | 21 |
| 22 | 23 | 24 | 25 | 26 | 27 | 28 |
| 29 | 30 | | | | | |

DECEMBER 2026

| SUN | MON | TUE | WED | THU | FRI | SAT |
|-----|-----|-----|-----|-----|-----|-----|
| | | 1 | 2 | 3 | 4 | 5 |
| 6 | 7 | 8 | 9 | 10 | 11 | 12 |
| 13 | 14 | 15 | 16 | 17 | 18 | 19 |
| 20 | 21 | 22 | 23 | 24 | 25 | 26* |
| 27* | 28 | 29 | 30 | 31 | | |

* Extra holiday pickup. For your zone's schedule, see portcoquitlam.ca/sortreport or the Sort & Report app.



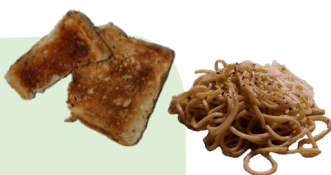
ORGANICS CART



Complete list: portcoquitlam.ca/greencart



Meat, bones, shellfish



Pasta, rice, baked goods



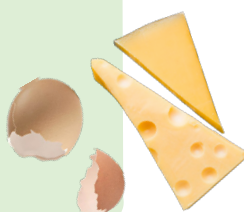
Fruits, vegetables



Food-soiled uncoated papers
(including paper towels and napkins)



Plant & yard trimmings,
wood or bamboo chopsticks



Eggshells, dairy



NOT ACCEPTED

These items cause **CONTAMINATION**
and fines are passed on to taxpayers.

PUT IN THE GARBAGE



Plastic-type bags / liners
*including compostable
& biodegradable*



Butcher, wax
& parchment
paper



Absorbent
meat tray
pads



Diapers &
sanitary or
cleaning wipes



Pet waste
or kitty
litter

TAKE TO A DEPOT



Plastic
bags



Wood that is
treated/stained
or has nails
or screws



Rocks
or soil

SEE OTHER SIDE OR SEARCH
PORTCOQUITLAM.CA/SORTITRIGHT



RECYCLING CART



Complete list: portcoquitlam.ca/recycling



Paper products
(not foil or plastic-lined)



Cardboard & boxboard



Shredded paper
(contained in
paper bag or
cardboard box)



Gable-top, tetra pak
& frozen food cartons



Paper & plastic
cups, lids



Plastic straws and
cutlery



Hard plastic containers
(remove/clean foil lids and
place separately in cart)



Metal lids & cans
(labels OK), foil and
foil products



Spiral-wound
cans, aerosol
cans (empty, no
chemicals)

ALL ITEMS MUST BE CLEAN AND LOOSE IN CART



NOT ACCEPTED

These items cause **CONTAMINATION**
and fines are passed on to taxpayers.

TAKE TO A DEPOT (See depot websites on other side to confirm acceptance)



Flexible plastic
bags & wrap



Styrofoam



Refundable
beverage
containers



Motor oil, paint,
household
chemicals



Electronics
& accessories

GARBAGE

Bathroom
garbage,
dryer sheets



ORGANICS

Paper towel



DONATE, SELL OR SEARCH PORTCOQUITLAM.CA/SORTITRIGHT



Non-packaging metal &
plastic, textiles



Light bulbs &
batteries



Power tools &
small appliances



GLASS BIN



Complete list: portcoquitlam.ca/glass

The grey bin is **ONLY** for non-refundable glass bottles and jars that held food. Take refundable containers to a depot.



Glass jars and bottles
(clear and coloured, may have labels)

IT'S EASY TO RECYCLE GLASS JARS & BOTTLES:

- 1 Remove lids, empty and rinse.
- 2 Put glass in the grey bin.
- 3 Put lids in the recycling cart.
- 4 Take refundables to a depot.



NOT ACCEPTED

These items cause **CONTAMINATION** and fines are passed on to taxpayers.

TAKE TO A DEPOT (See depot websites on other side to confirm acceptance)



Refundable bottles (e.g. wine, spirits, beer)



Lightbulbs or fixtures

PUT IN RECYCLING CART



Lids

PUT IN GARBAGE



Broken glass (wrapped or in a box)

DONATE, SELL OR SEARCH PORTCOQUITLAM.CA/SORTITRIGHT



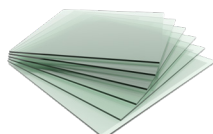
Miscellaneous glass or crystal



Ceramic products



Glass dishes, glasses or cookware



Window glass or mirrors



GARBAGE CART



Complete list: portcoquitlam.ca/garbage



CHECK FIRST!

Before putting something in the trash, first check if it can be reused or recycled.



Garbage bags,
(including compostable
& biodegradable)



Butcher, wax
& parchment
paper



Absorbent
meat tray pads



Diapers &
sanitary or
cleaning wipes



Six-pack rings
(cut rings first)



Broken household
items that can't be
donated or recycled



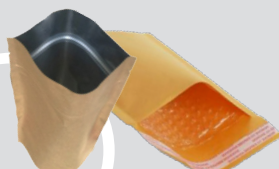
Pet waste or kitty
litter (small quantities,
double bagged)



Ribbons and
bows



Food-soiled foil wrap,
and aluminum plates
and trays



Foil-lined or plastic-lined
bags or envelopes



Used masks
& gloves



NOT ACCEPTED

These items cause **CONTAMINATION**
and fines are passed on to taxpayers.

PUT IN ORGANICS CART



Food and yard waste,
food-soiled uncoated papers

PUT IN RECYCLING CART OR TAKE TO DEPOT



Plastic, metal and paper
recyclables

SEE OTHER SIDE OR SEARCH PORTCOQUITLAM.CA/SORTITRIGHT



Items that must go to a
depot or take-back program



Construction
materials



Paint, oil or
chemicals



Medication and
needles



RECYCLING DEPOTS



POCO RETURN-IT DEPOT

2577 Kingsway Ave,
Port Coquitlam

[returnit.ca/
biggar](http://returnit.ca/biggar)

COQUITLAM RETURN-IT DEPOT

2560 Barnet Hwy,
Coquitlam

[returnit.ca/
coquitlam](http://returnit.ca/coquitlam)

LOUGHEED RETURN-IT DEPOT

1045A Lougheed
Hwy, Coquitlam

[returnit.ca/
lougheed](http://returnit.ca/lougheed)

HAPPY STAN'S RECYCLING / HSR SERVICES

1603 Langan Ave,
Port Coquitlam

[happystan.com/
community](http://happystan.com/community)



**RETURN-IT DEPOTS ACCEPT MORE THAN JUST
REFUNDABLE CONTAINERS.** *Check their websites
for acceptance of these and other recyclables:*



Styrofoam



Refundable beverage
containers



Electronics



Soft and flexible
plastic



Motor oil, paint,
household chemicals

SOFT AND FLEXIBLE PLASTIC INCLUDES:



Plastic bags & wrap
(e.g. drop sheets, cling wrap,
overwrap for soft drinks)



Zipper bags &
pouches



Crinkly wrappers & bags
(including foil gift wrap
and cellophane)



Packaging with
plastic seal



Net & woven
plastic bags



Protective packaging
(e.g. all-plastic envelopes,
bubble wrap)



TAKE-BACK PROGRAMS

Search for the items below at **portcoquitlam.ca/sortitright** or in the PoCo Sort & Report app: **portcoquitlam.ca/sortreport**.



Light bulbs and lighting equipment
lightrecycle.ca



Paint cans, household hazardous materials
PoCo Return-it Depot
returnit.ca/biggar



Used motor oil
bcusedoil.com



Tires
tsbc.ca



Electronics
PoCo Return-it Depot
returnit.ca/biggar



Small appliances and power tools
electrorecycle.ca

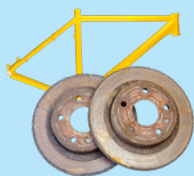


Batteries
call2recycle.ca
or Return-it Depots
returnit.ca

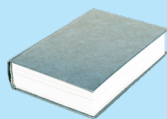


Medication/needles
healthsteward.ca

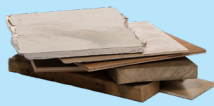
OTHER DISPOSAL ALTERNATIVES



Scrap metal
portcoquitlam.ca/sortitright
Woori Metal



Soft/hard cover books
Donate if usable.
If not, recycle pages and discard cover and binding



Construction materials
Recycling and Waste Centre, 995 United Blvd., Coquitlam (search "United Boulevard" at metrovancover.org)



Propane tanks and butane cylinders
Recycling and Waste Centre, 995 United Blvd., Coquitlam (search "United Boulevard" at metrovancover.org)



Unwanted usable items
Donate or join in City-wide Garage Sale:
portcoquitlam.ca/garagesale
Search Facebook for Buy Nothing Groups



Large household items (*homes with City waste services*)
portcoquitlam.ca/largeitem



Clothing
think-thrice.ca
or Salvation Army Thrift Store at 2850 Shaughnessy St., or other thrift stores



Pet waste/kitty litter
Small amounts double-bagged in garbage cart, or City dog waste bins
portcoquitlam.ca/dogs

CITY WASTE SERVICES

All **single-family homes** in Port Coquitlam receive City waste services, paid for on their property tax bills. **Multi-family complexes** and **businesses** arrange their own waste services.

Carts and bins

See other side for details about recycling, organics and garbage carts and glass bins. Depending on the property and household needs, carts are provided in 120L, 240L or 360L sizes. Larger or extra carts are available for a fee. Call 604.927.5496 or get a Service Level Change form at portcoquitlam.ca/waste (Waste Cart & Collection Info page).



When to set out carts



Move unlocked carts to the street between 5:30-7:30 am on collection day. Put carts away and secure them by 7 pm.

Setting out carts for automated collection

- Place carts at the edge of the road, wheels against the curb (if there is one).
- Carts must open towards the street.
- Ensure lids are closed. *Overflowing carts may not be picked up.*
- Provide adequate space around carts (see diagram at right).



Large item pickup

Homeowners who receive City waste services can schedule free curbside pickup for up to six large items per year. A wide variety of large items are accepted, including mattresses, furniture, appliances, exercise equipment and more. Info: portcoquitlam.ca/largeitem.

3 items permitted per pickup, twice a year

Set-out/set-back service

A set-out/set-back service is available for those who have physical difficulty moving carts to the curb and back (*medical documentation may be required*). Download an application at portcoquitlam.ca/waste or call 604.927.5496.

Cold weather collection

When temperatures dip below zero, your green cart may be picked up later to allow contents to thaw. Hazardous road conditions can also cause delays.

Missed pickup?

Report it to 604.927.5496, publicworks@portcoquitlam.ca, or the PoCo Sort & Report app.



CART TIPS



CLEAN
off all food residue from recyclables



FLATTEN
cardboard boxes to save space



NO PLASTIC BAGS
in recycling or organics cart



USE REGULAR OR COMPOSTABLE PAPER BAGS
in organics cart*

* Compostable or biodegradable plastic bags are not accepted.

BE BEAR AWARE

Don't Be a Bear Target!

One meal from a waste cart or fruit tree is enough to bring a bear back again and again. Secure attractants to keep your neighbourhood safe and avoid a fine.

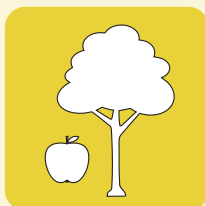


LOCK IT UP

Secure garbage and organics carts in a garage, shed or with an approved cart lock. *Secure carts even if empty.*



Ensure attractants are inaccessible to wildlife

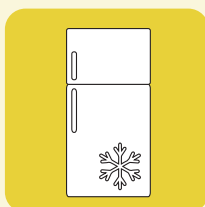


Pick ripe fruit, collect fallen fruit



SET IT OUT

Set out unlocked carts at curb 5:30-7:30 am on collection day, and secure by 7 pm.



Lock outdoor fridges and freezers



Clean BBQ and grease tray after use

Keep these items away from bears

- Garbage & food scraps
- Drink containers
- Diapers
- Greasy barbecues
- Grease trays & barrels
- Pet food & bird seed
- Ripe or fallen fruit & berries
- Petroleum & chemical products
- Compost piles

See a bear?

Bear sightings are tracked. If you see a bear, call the Provincial Conservation Officer Service 24/7 toll-free at 1.877.952.RAPP (7277) or go to rapp.bc.ca. *Only aggressive bears are destroyed, as a last resort.*

More info: portcoquitlam.ca/bears



TIPS TO KEEP BEARS AWAY

- Freeze smelly food scraps until collection day.
- Keep carts clean — wash them out regularly.
- Spray carts with ammonia.

City Waste Cart Locks

The City provided wildlife-resistant cart locks to households receiving City waste services that didn't have a secure shelter to store carts.

The locks are effective if used properly.

- ▶ Go to portcoquitlam.ca/lock for a video on securing your cart with a City lock.
- ▶ Order replacement locks and third arms at 604-927-5496.



Don't forget to remove locks before setting carts out at the curb!

Don't be a wishcycler.



Sort it Right!

wishcycling • [wish] [sai-kluhng] verb

Wishcycling is putting items in the recycling bin without knowing for sure if, where or how they should be recycled.

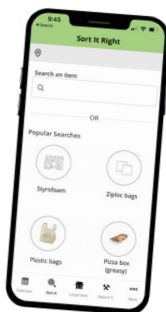
Wishcycling includes **mis-sorted waste** and **soiled recycling**. It leads to expensive fines for the City, driving up costs that are passed on to taxpayers.

When you wishcycle, more goes to the landfill and costs go up.

GET THE FREE SORT & REPORT APP



- Use the search tool to sort waste correctly
- See your collection schedule and zone
- Report City problems and more!



portcoquitlam.ca/sortreport



MORE RESOURCES



Info, search tool and other waste-sorting resources: portcoquitlam.ca/sortitright

Recycling Council of BC:
RCBC.ca (604-732-9253)



Printed resources at City facilities,
or drop by Public Works to speak
to our helpful staff



604.927.5496



Ask a question or request a presentation for your group:
portcoquitlam.ca/ambassadors

C I T Y O F
PORT
COQUITLAM

Information about City waste services:
604.927.5496 | publicworks@portcoquitlam.ca
Public Works: 1737 Broadway Street
(see portcoquitlam.ca/publicworks for hours)

Last updated: Fall 2025

portcoquitlam.ca/sortitright