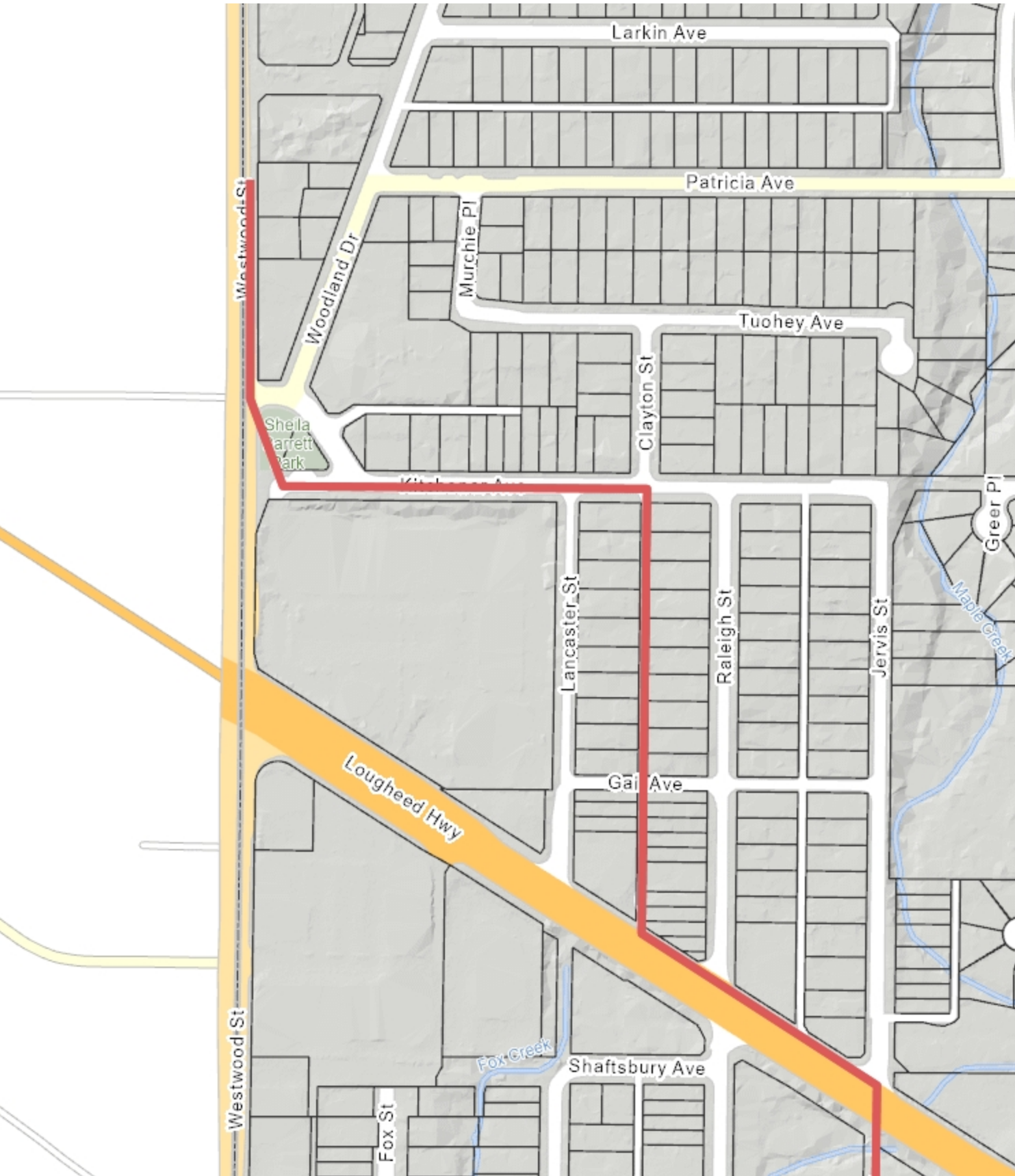


Sanitary Sewer Alignment - Westwood to Kingsway (1 of 2)



89 0 44.5 89 Meters

Scale 1 : 3,500

The City of Port Coquitlam makes no representation as to, and does not warrant, the accuracy or completeness of the data and the City is not responsible for any errors or omissions in the data. The user waives any right to claim damages or pursue any other remedy against the City of Port Coquitlam that arise out of or in connection with the delivery or use of the data.



Oct 28, 2024