

IF NOT 50 mm ADJUST SCALES  
50 mm

SCALE(S) SHOWN ARE INTENDED FOR ANSI D (22X34) SIZE DRAWINGS. TABLOID (11X17) SIZE DRAWINGS ARE 1/2 OF SCALE(S) SHOWN UNLESS NOTED OTHERWISE



EXISTING POWER POLE

HANDLEY CRESCENT

EXISTING SUPPLY FROM  
BCH TO EXISTING KIOSK  
7.6 m STREET LIGHT  
SEE DETAIL 1,2,3  
ON DWG E-502

EXISTING ELECTRICAL KIOSK  
TO BE REMOVED  
EXISTING EMERGENCY  
GENERATOR TO BE REMOVED  
AND REINSTALLED IN NEW LOCATION  
PROPOSED EMERGENCY  
GENERATOR RELOCATION  
FOR CONCRETE SLAB DETAIL  
SEE DWG S-501.

2 x Ø53 mm UNDERGROUND RPVC  
INSTRUMENTATION CONDUITS  
FROM KIOSK TO WET WELL

3 x Ø53 mm UNDERGROUND RPVC  
PUMP CABLE CONDUITS FROM  
KIOSK TO WET WELL

PROPOSED VALVE  
CHAMBER

ASPHALT  
DRIVEWAY

1 x Ø35 mm RPVC  
2 No.12 RW90  
1 No.12 BOND

4 x Ø53 mm RPVC UNDERGROUND  
CONDUITS FROM KIOSK TO  
EMERGENCY GENERATOR

FAN COMPARTMENT

PROPOSED SCADA KIOSK  
W/ FAN AND WASH-DOWN  
COMPARTMENTS

WASH-DOWN COMPARTMENT

WET WELL

WET WELL VENT PIPE

VENTS

2 x Ø35 mm UNDERGROUND RPVC  
INSTRUMENTATION CONDUITS FROM  
KIOSK TO VALVE CHAMBER

RPVC UNDERGROUND VENTILATION  
DUCT FROM WET WELL

PLAN

1:50

SITE PLAN

PERMIT TO PRACTICE  
ASSOCIATED ENGINEERING (B.C.) LTD.  
PERMIT NUMBER: 1000163  
Engineers & Geoscientists BC



CITY OF PORT COQUITLAM  
PROJECT # - PRO 2023-04

HANDLEY SANITARY PUMP STATION  
REPLACEMENT

20222465-00

SCALE: AS SHOWN



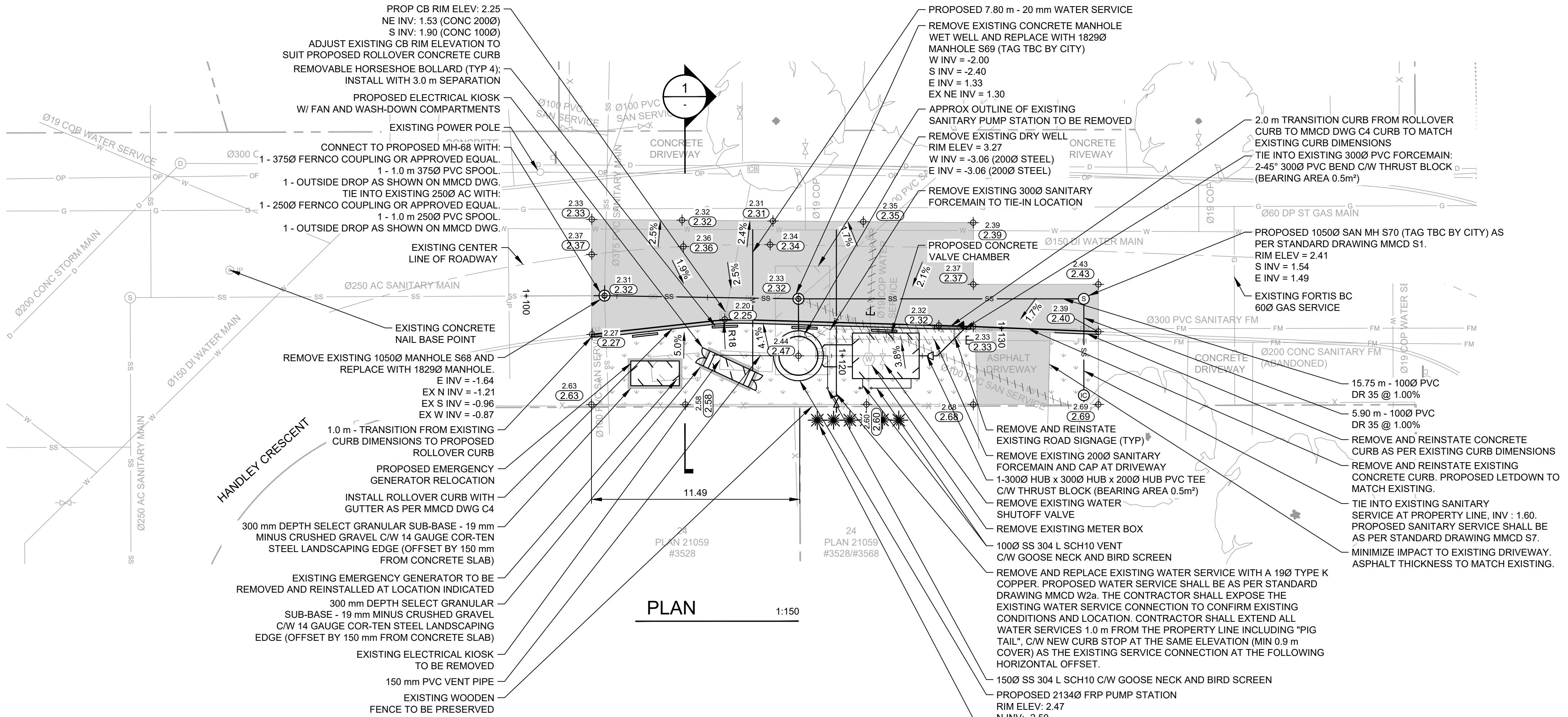
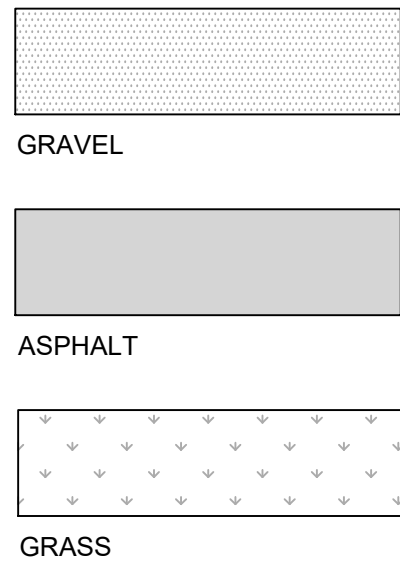
REV	DATE	DESIGN	DRAWN	DESCRIPTION
0	2023MAR03	C. VO MERWE	G. SHEN	ISSUED FOR TENDER/CONSTRUCTION

DRAWING	REVISION	SHEET
2465-00-E-101	0	8

PLOT DATE: 2023-03-03 2:32:58 PM  
C:\Users\zhangj\OneDrive\Documents\2465-00-E-101.dwg  
DWG PATH: \\2022-2465-00\Documents\2465-00-E-101.dwg



LEGEND:



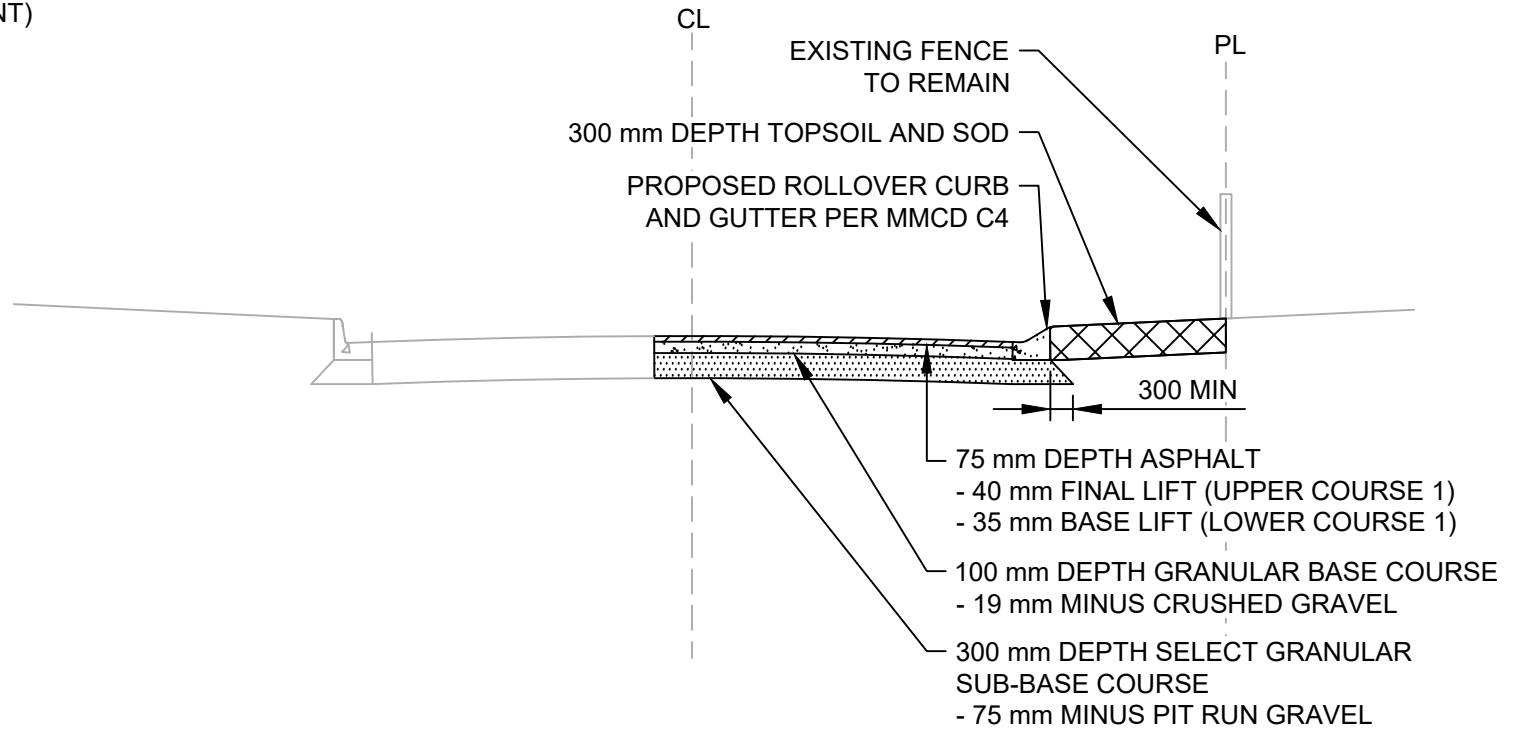
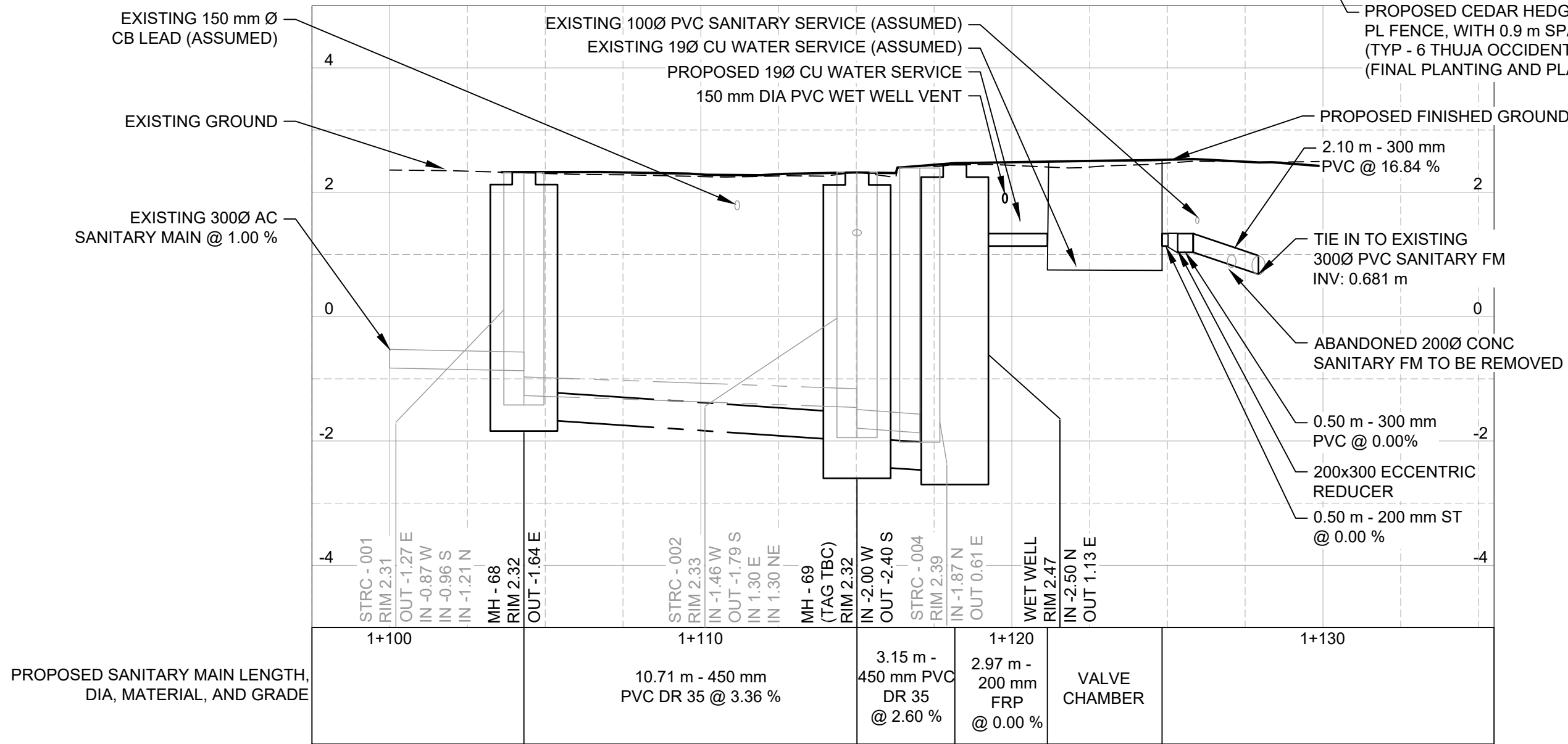
POINT TABLE			
PNT#	NORTHING	EASTING	ELEV
1	5458104.88	519309.81	2.33
2	5458104.84	519314.79	2.32
3	5458104.80	519319.81	2.31
4	5458104.75	519324.79	2.35
5	5458104.70	519330.88	2.39
6	5458098.96	519330.86	2.34
7	5458094.66	519330.86	2.68
8	5458094.66	519324.97	2.60
9	5458094.66	519314.97	2.58
10	5458094.66	519309.79	2.63
11	5458099.78	519309.79	2.30
12	5458100.67	519310.51	2.32
13	5458099.36	519317.15	2.25
14	5458100.50	519321.21	2.32
15	5458097.35	519321.21	2.47
16	5458099.03	519328.96	2.32
17	5458101.30	519330.86	2.37
18	5458101.30	519337.76	2.43
19	5458098.68	519337.76	2.40
20	5458102.95	519309.80	2.37
21	5458103.39	519314.87	2.36
22	5458103.49	519319.65	2.34
23	5458103.29	519330.87	2.41
24	5458094.67	519337.76	2.69

GENERAL NOTES:

- SURVEY PROVIDED BY OTHERS.
- SURVEY IS IN LOCAL GROUND COORDINATES AS SHOWN IN THE TABLE BELOW:

SURVEY CONTROL POINTS			
POINT ID.	NORTHING (m)	EASTING (m)	ELEVATION (m)
02H2444	5456222.235	518175.841	3.784
EXISTING CONCRETE NAIL BASE POINT	5448102.085	519289.833	2.46

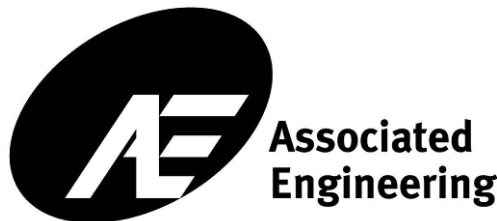
- MONUMENT 02H2444 IS LOCATED ON THE SOUTH SIDE OF ARCHBISHOP CARNEY SECONDARY.
- COORDINATES ARE IN UTM NAD83(CSRs)4.0.0BC.1.MVRD SYSTEM. USE A COMBINED SCALE FACTOR OF 0.9996071 AT THE CONCRETE NAIL BASE POINT TO CONVERT TO GRID COORDINATE SYSTEM.
- ELEVATIONS ARE IN METERS AND ARE REFERENCED TO CVD28GVRD - GEODETIC DATUM AND TIED TO 02H2444.
- REFER TO RECORD DRAWINGS FOR DETAILS OF THE EXISTING WET WELL AND PUMP STATION STRUCTURES.
- REFER TO GEOTECHNICAL REPORT BY BRAUN GEOTECHNICAL ENGINEERING DATED DECEMBER 21, 2022.



1 DETAIL NTS  
TYPICAL ROAD SECTION

PROFILE 1:150 H; 1:75 V

PERMIT TO PRACTICE  
ASSOCIATED ENGINEERING (B.C.) LTD.  
PERMIT NUMBER: 1000163  
Engineers & Geoscientists BC



CITY OF PORT COQUITLAM  
PROJECT # - PRO 2023-04

HANDLEY SANITARY PUMP STATION  
REPLACEMENT

20222465-00

SCALE: AS SHOWN



CIVIL  
PLAN  
SITE LAYOUT & SURVEY CONTROL

DRAWING	REVISION	SHEET
2465-00-C-101	0	3