

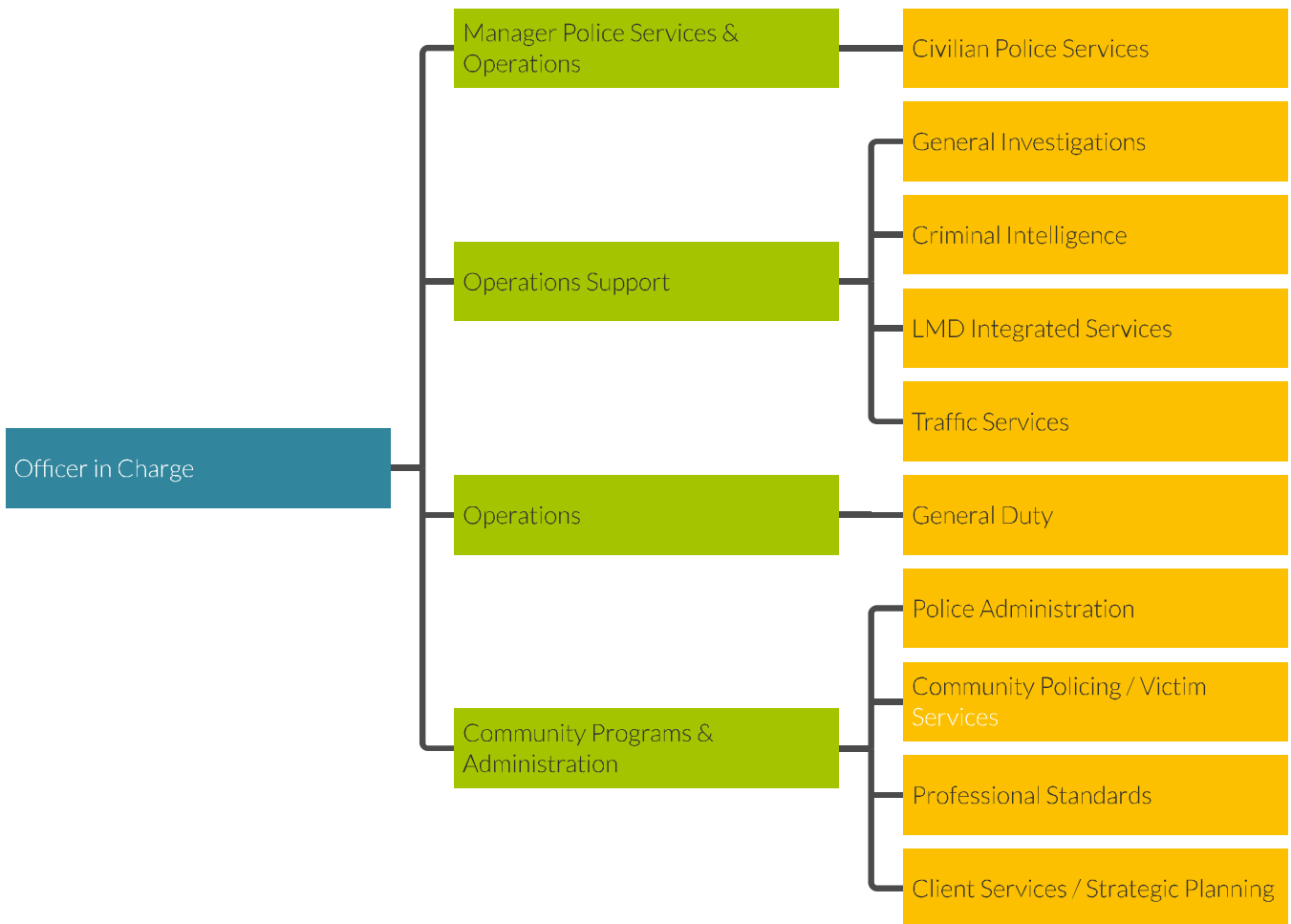
# RCMP

## FOCUS

The Coquitlam RCMP jurisdiction includes the communities of Anmore, Belcarra, Coquitlam and Port Coquitlam—a permanent resident population of more than 200,000 citizens augmented by the thousands who visit for work, education and recreation.

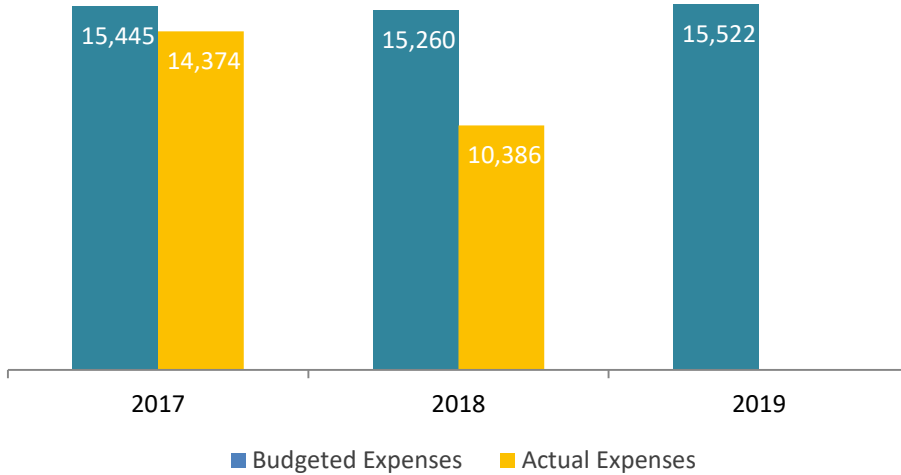
From 24/7 response-to-calls and criminal investigations to strategic initiatives focused on preventing crime, reducing crime and connecting with citizens, the Coquitlam RCMP team works hard to make Port Coquitlam a happy, vibrant, safe community of engaged residents and thriving businesses.

## ORGANIZATIONAL STRUCTURE

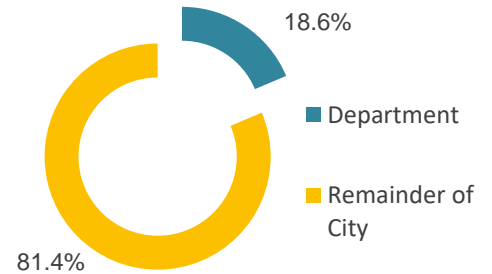


## OPERATING BUDGET

Total Expenses (in Thousands)



Percent of City Expenses



	2018 Budget	2019 Budget	\$ Change	% Change	2018 YTD
<b>REVENUES:</b>					
Sale of services	\$20,400	\$20,400	\$ -	0.0%	\$ 37,912
Contributions	640,000	640,000	-	0.0%	616,523
Other revenue	-	-	-	-	20,857
<b>Total Revenues</b>	<b>\$660,400</b>	<b>\$660,400</b>	<b>\$ -</b>	<b>0.0%</b>	<b>\$ 675,292</b>

	2018 Budget	2019 Budget	\$ Change	% Change	2018 YTD
<b>EXPENSES:</b>					
Contracted and other services	\$15,259,635	\$15,522,035	\$262,400	1.7%	\$10,386,040
<b>Total Expenses</b>	<b>\$15,259,635</b>	<b>\$15,522,035</b>	<b>\$262,400</b>	<b>1.7%</b>	<b>\$10,386,040</b>

	2018 Budget	2019 Budget	\$ Change	% Change	2018 YTD
<b>ALLOCATIONS (TO) / FROM ACCUMULATED SURPLUS:</b>					
Transfer from Reserve	\$ 600,000	\$ 600,000	\$ -	0.0%	\$ -
<b>Total Allocations</b>	<b>\$ 600,000</b>	<b>\$ 600,000</b>	<b>\$ -</b>	<b>0.0%</b>	<b>\$ -</b>
<b>NET OPERATING BUDGET</b>	<b>\$ (13,999,235)</b>	<b>\$ (14,261,635)</b>	<b>\$ (262,400)</b>	<b>1.9%</b>	<b>\$ (9,710,748)</b>

## SIGNIFICANT CHANGES

Line Item	Adjustment Category	Nature of Adjustment	Amount
Contracted and other services	Contracted Services Public Safety Building	Increase in Public Safety Building contract	\$ 71,900
	Contracted Services RCMP	Increase in RCMP contract	190,500
		<b>Total</b>	<b>\$ 262,400</b>

## INDICATORS AND MEASURES

	2014	2015	2016	2017	2018
Injury/fatal collisions	113	121	101	85	83
Break & Enter (All)	371	374	284	273	190
Auto Theft (All)	873	1,247	883	778	539
Robbery (All)	37	34	30	30	Discontinued